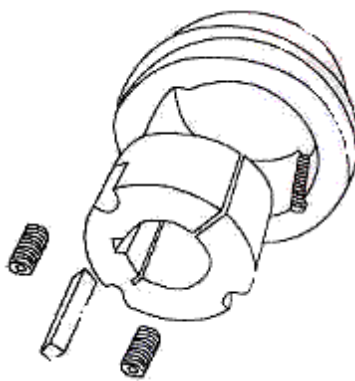


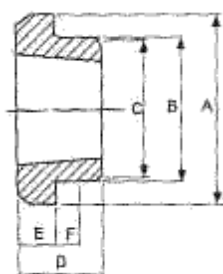
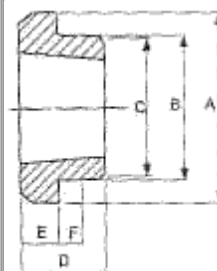


WELD ON HUBS

Taper bore weld on hubs are made of steel, drilled, tapped and taper bored to receive standard tapered bushes. The extended flange provides the convenient means of welding hubs into fan rotors, steel pulleys, plate sprockets, impellers, agitators and many other devices, which must be firmly fastened entirely suitable for use where severe operating conditions are met. Tightening the screws contracts the bore of the bush, thereby locking it to the shaft with the equivalent of a press fit. This type of construction eliminates mounting difficulties, it also prevents loosening and wearing happened to the hub during operation.



HUB REF	BUSH NO.	A	B	C	D	E	F
W12	1215	73.03	63.50	62.71	38.10	15.88	9.53
W16	1615	82.55	73.03	72.24	38.10	15.88	9.53
W20	2017	101.60	88.90	88.11	44.45	19.05	14.45
W25	2517	127.00	111.13	110.34	4.45	19.05	14.45
W30	3030	149.86	133.35	132.56	76.20	25.40	19.05
W35	3535	184.15	158.75	157.96	88.90	31.75	25.40
W40	4040	225.43	196.85	196.06	101.60	31.75	31.75
W45	4545	254.00	222.25	221.46	114.30	38.10	38.10



HUB REF	BUSH NO.	A	B	C	D	E	F
12	1210	70	65	64.5	25	9	10
16-1	1610	80	75	74.5	25	9	10
20	2012	95	90	89.5	32	12	12
25	2517	115	110	109.5	44	19	15
30-2	3020	145	140	139.5	50	20	15
35	3525	190	180	179.5	65	25	25
40	4040	200	190	189.5	101	32	30
45	4545	210	200	199.5	114	40	30
50	5050	230	220	219.5	127	40	45

11, VASTA HOUSE, GR. FLOOR, JANMABOOMI MARG,
FORT, MUMBAI - 400001, INDIA.

TEL: 91-22-22844307/22871995/22872449

FAX: 91-22-22873597/22870770

E-mail: info@wiperdrive.com, WEB SITE: www.wiperdrive.com