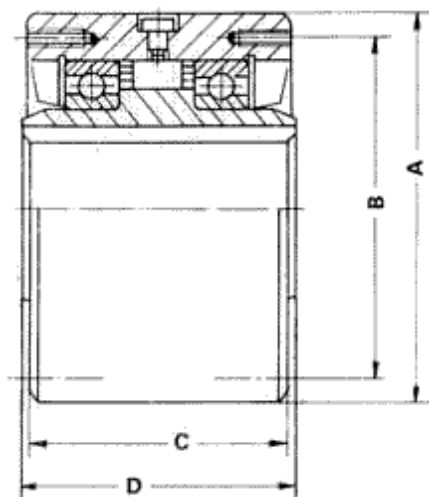




SF TYPE



MODEL	TORQUE Nm	MAXIMUM ¹ OVERRUNNING RPM		MAX ² mum BORE mm	KEYWAY mm	A mm	Bmm	Cmm	Dmm	MOUNTING HOLES			APPROX. WT
		INNER RACE	OUTER RACE							NOS.	THREAD SIZE UNF	DEPTH mm	
SF-300	210	2900	800	19.0	4.76x2.38	76.20 76.15	66.7	60.3	63.5	4	1/4"	13	1.5
SF-400	413	2700	800	22.2	4.76x2.38	88.90 88.85	73.0	66.7	69.9	4	5/16"	16	2.2
SF-500	1172	2400	750	33.2	6.33x2.38	107.95 107.90	92.1	85.7	88.9	4	5/16"	16	4.0
SF-600	2070	2100	700	50.8	12.7x4.76	136.53 136.47	120.7	92.9	95.3	6	5/16"	16	7.0
SF-700	5517	1500	500	74.5	15.8x3.16	180.92 180.89	158.8	123.8	127.0	6	3/8"	19	16.0
SF-750	9379	1500	500	87.3	19.05x4.76	222.22 ±0.025	177.8	149.2	152.4	6	1/2"	25.40	38.0
SF-800	15862	1300	475	112.7	25.4x6.35	253.98 ±0.038	227.0	149.2	152.4	8	1/2"	25.40	48.0
SF-900	22758	1200	400	138.1	25.4x6.35	304.76 ±0.038	247.65	158.7	161.9	10	5/8"	31.75	72.0
SF-1000	29655	1200	325	163.5	31.75x9.53	380.96 ±0.036	298.45	171.8	177.8	12	5/8"	31.75	115.0

1)The max overrunning speed are for oil bath lubrications only.

If higher outer race overrunning speeds are required other than those listed please consult.

2)Bore & keyway size to be specified by customer while ordering .Only maximum size of bore & keyway stated in table.

11,VASTA HOUSE,GR.FLOOR,JANMABOOMI MARG,
FORT ,MUMBAI-400001 ,INDIA.

TEL:91-22-22844307/22871995/22872449

FAX:91-22-22873597/22870770

E-mail:info@wiperdrive.com,WEB SITE:www.wiperdrive.com