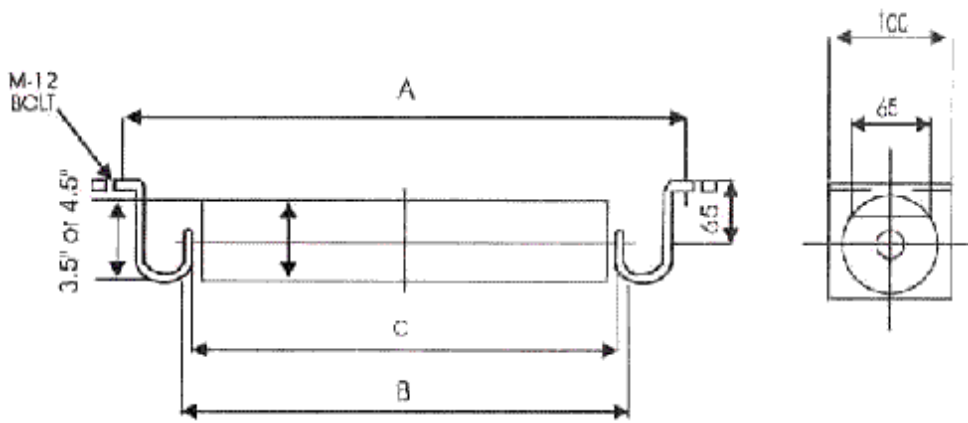




RETURN IDLER



ROLLER BODY : The roller body is made of special ERW tube with close tolerance ensuring, smooth, shock-free and eccentricity free, running with minimum diametral runout.

SHAFT : The shaft is made of bright round bar steel and the ball bearing seat grid is of ISA quality, shaft ends can be supplied with cross drilling for interlinking in garland type idlers.

BEARING : Rollers are fitted with precision ball bearings having optimum internal clearance.

Lubrication : All ball bearings, labyrinth and grease chambers are permanently lubricated during production with a high quality grease.

RANGE & CAPACITY : belt conveyor idlers are available in belt width from 400 mm to 1200 mm and are suitable for relatively low and medium capacities and materials at limited lump size. The idlers are available with 3/12" & 4 1/2" diameter rollers. However, other diameter rollers can also be supplied on request.

QUALITY CONTROL : All roller components are tested at every stage of manufacture, 100% assembled rollers are tested for free rotative and random sample tests are also carried out for ingress of dust, water, slurry and for measuring friction factor.

OTHER PRODUCTS : *Drum pulleys * Gravity Roller conveyors * Screw Conveyors * Portable Belt Conveyors * Wing Pullies.

BELT	A	B	C	APPROX WT . IN KG.	
				3½ ROLL	4½ ROLL
400	690	507	500	10	13
450	740	557	550	10	14
500	790	607	600	11	15
600	890	707	700	12	16
650	940	757	750	13	17
750	1040	857	850	14	19
800	1090	957	950	15	20
900	1190	1057	1050	16	22
1000	1290	1157	1150	17	23
1200	1490	1407	1400	19	28

11, VASTA HOUSE, GR. FLOOR, JANMABOOMI MARG,
FORT, MUMBAI - 400001, INDIA.

TEL: 91-22-22844307/22871995/22872449

FAX: 91-22-22873597/22870770

E-mail: info@wiperdrive.com, WEB SITE: www.wiperdrive.com