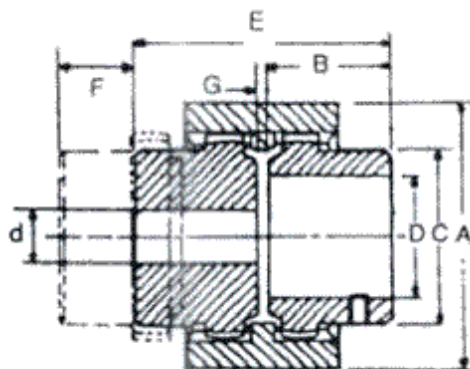
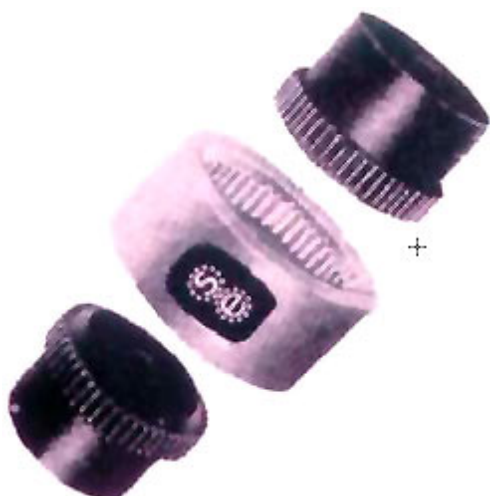
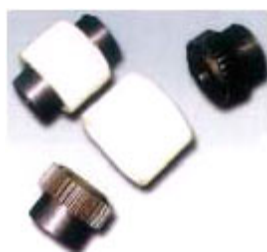




## POWER GRIP NYLON COUPLING



The crowned gear tooth permits axial angular misalignment .No transmission noise due to the coupling is easy to assemble and require no lubrication.

### MAXIMUM

COUPLING SIZE	H.P.AT 3000 R.P.M.	H.P.A1 1500 R.P.M.	H.P.AT 1000 R.P.M.	H.P. AT 750 R.P.M.	MAX TORQUE AT 1500 R.P.M.	MAX R.P.M.
POWER GRIP 19	3	2	1.5	1	0.4 KGM.	3000
POWER GRIP28	10	7.5	5	3	2.1 KGM.	3000
POWER GRIP48	30	2.5	20	1.5	14.0 KGM.	3000
POWER GRIP65	75	7.5	50	4.0	35.1 KGM.	3000

FOR SHOCK LOAD APPLICATION USE THE FOLLOWING SAFETY FACTOR F.

UNIFORM-1.0 MODERATE-1.25 HEAVY -1.75

RATING OF COUPLING: $\frac{H.P. APPLICATION \times 100 \times F}{RPM OF APPLICATION}$  MAXIMUM PREMISSABLE

RPM OF APPLICATION

ANGULAR MISALIGNMENT 1.5 DEGREE

### DIMENTIONAL DETAILS

COUPLING SIZE	MAX BORE 'D' m.m	BOX DIA.'A' m,m	OUT SIDE DIA 'A' m. m.	BOX THROUGH LENGH m.m	INNER GAP 'G' m.m.	TOTAL LENGTH 'E' mm	HUB WIDTH CLEARANCE 'F' mm	PILOT BORE 'd' mm
POWER GRIP19	19	32	48	25	4	54	16	8
POWER GRIP28	28	44	66	40	4	84	20	10
POWER GRIP48	48	68	100	50	4	104	22	20
POWER GRIP 65	65	96	140	70	4	144	32	26

11,VASTA HOUSE,GR.FLOOR,JANMABOOMI MARG,  
FORT ,MUMBAI-400001 ,INDIA.

TEL:91-22-22844307/22871995/22872449

FAX:91-22-22873597/22870770

E-mail:[info@wiperdrive.com](mailto:info@wiperdrive.com),WEB SITE:[www.wiperdrive.com](http://www.wiperdrive.com)