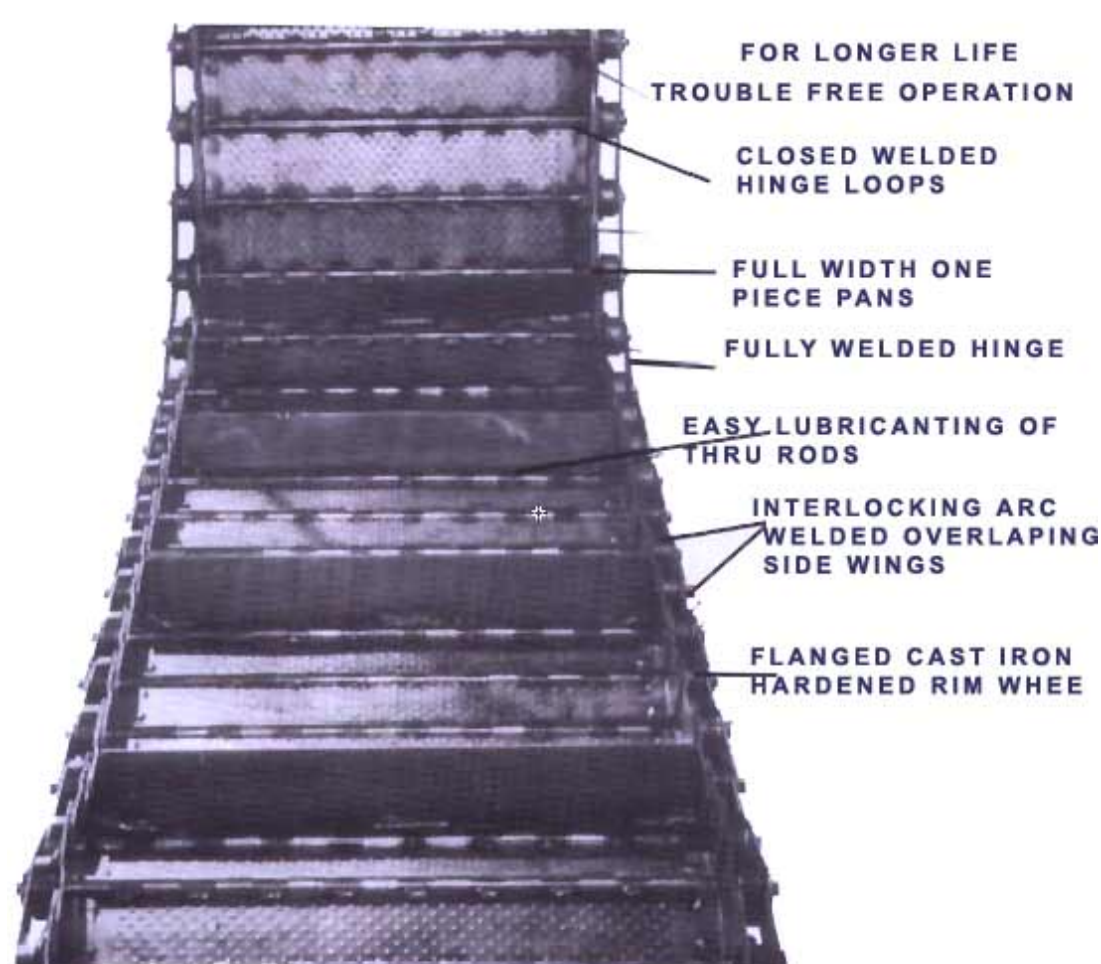




STEEL BELTING CHAINS

STEEL BELTINGS WELDED HINGE DESIGN



FOR LONGER LIFE
TROUBLE FREE OPERATION

CLOSED WELDED
HINGE LOOPS

FULL WIDTH ONE
PIECE PANS

FULLY WELDED HINGE

EASY LUBRICATING OF
THRU RODS

INTERLOCKING ARC
WELDED OVERLAPING
SIDE WINGS

FLANGED CAST IRON
HARDENED RIM WHEEL

PAN AVAILABEL:

- Dimpled(as shown)
- Perforated Plain



OPTIONAL WHEEL



FORGED STEEL HEAT
TREATED



POWDERED STEEL HEAT
TREATED

METHOD OF PAN CONSTRUCTION

Continuous full width,one-piece parts substantially strengthens the belt against dections from shocks pressure in teh center and reinforce the rods against bending.

Other methods have the pans in segments(not one piece)and have no lateral support.These inferior methods can leave pans distored and separated by concentrated loads and shocks at the juncture of the segments.



SECTIONTHRU PAN LOOPS



TOP SIDE



BOTTOM SIDE

LUBRICATIONS

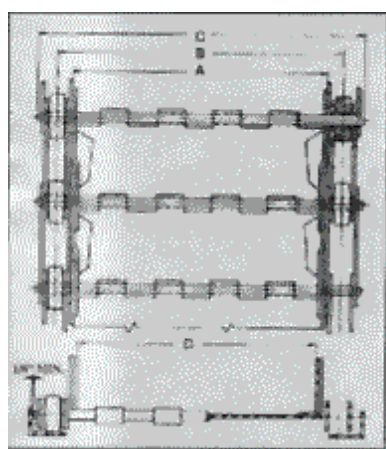


Lubricant of the thru rods with the "Welded Hinge" using no tube is accomplished through the opening between the hinge loops.

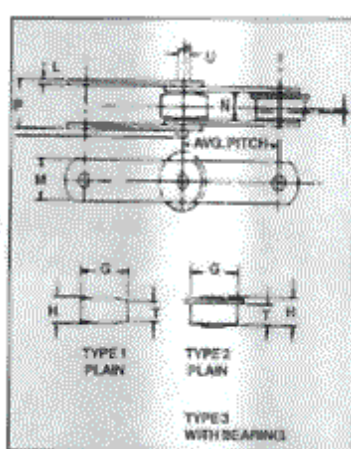
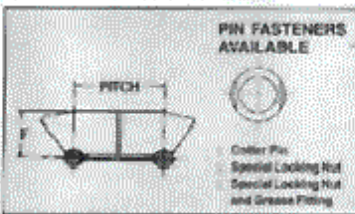
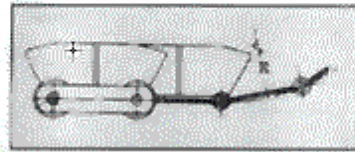
HINGE LOPS WITH NO TUBE.....PIN
LUBRICANTION MADE EASY BETWEEN THE
LOOPS



HINGE LOOPS WITH TUBE AND PIN .PIN
LUBRICANTION BLOCKED BY TUBE



STEEL BELT SPECIFICATIONS



BASIC "WELDED HINGE" BELTS SPECIFICATIONS

NORMAL BELTWIDTH	"6" PITCH CHAIN					
	CHAIN CTRS B	D.A. WIDTH C	INSIDE WINGS D	CHAIN CTRS. B	D.A. WIDTH C	INSIDE WINGS D
12	14 5/18	17 3/8	11 3/16	15 9/16	20 3/8	11 3/76
18	20 5/16	23 3/8	17 3/16	21 9/19	26 3/8	17 3/16
24	26 5/16	28 3/8	23 3/16	27 9/16	32 3/8	23 3/16
30	32 5/16	35 3/8	28 3/16	33 9/16	38 3/8	29 3/16
36	38 5/16	41 3/8	35 3/16	39 9/16	44 3/8	35 3/16
42	44 5/18	47 3/8	41 3/16	45 9/16	50 3/8	41 3/16
48	50 5/16	53 3/8	47 3/16	51 9/16	56 3/8	47 3/16
54	56 5/16	59 3/8	53 3/16	57 9/16	62 3/8	53 3/16
60	62 5/16	65 3/8	59 3/16	63 9/16	68 3/8	58 3/16

BASIC CHAIN SPECIFICATION

ROLLER												
AVG. PITCH	TYPE	DIA G	WIDTH H	TREAD T	DIA. D	END STYLE	THK L	WIDTH M	SPACE E	D.A. WIDTH	ALLOWABLE BELT PULL	
6	1	21/2	13/16	11/18		3	1/4	2	11/4	25/26	5,780	
6	2	3	11/2	13/18	3/4	3	1/4	2	16/16	25/8	7,200	
6	3	3	11/2	13/16	3/4	50	1/4	2	15/16	25/8	7,200	
9	2	3	11/2	13/16	3/4	3	1/4	2	19/16	25/8	7,200	
9	3	3	11/2	13/16	3/4	56	1/4	2	19/16	25/8	7,200	
9	3	4	115/15	17/16	3/4	56	3/8	2210	2	35/18	10,400	
9	3	4	115/18	17/18	1	56	3/8		2	35/18	13,600	

11,VASTA HOUSE,GR.FLOOR,JANMABOOMI MARG,

FORT ,MUMBAI -400001 ,INDIA.

TEL:91-22-22844307/22871995/22872449

FAX:91-22-22873597/22870770

E-mail:info@wiperdrive.com,WEB SITE:www.wiperdrive.com