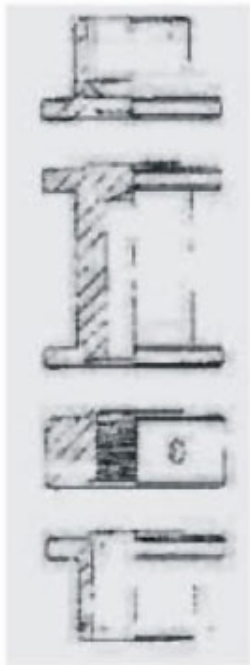


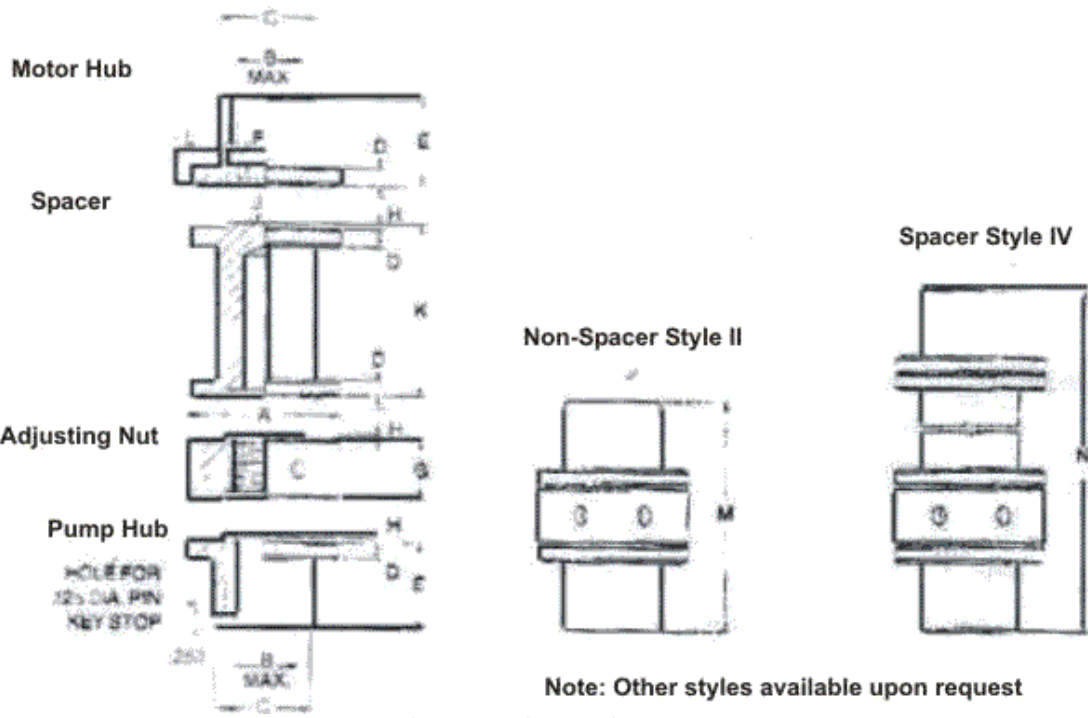


RIGID COUPLING WITH LOCKNUT



BENEFITS OF RIGID COUPLINGS

Easily Adjustable for Vertical Clearance. Infinite Life. Corrosion Resistant Phosphate Coating Robust Design All Stainless Steel Construction Available. The CPLR & CPAT rigid coupling are Designed to transmit torque to vertically Mounted equipment including: Vertical Pumps Vertical Mixer Available in spacer and non-spacer styles. Both styles utilize an adjustment nut assembly which allows for vertical clearance adjustment of the driven equipment. The spacer style features a removable spacer for easy maintenance of the driven equipment. The non-spacer style is recommended for equipment where there is a minimum distance between shaft.



COUPLING SELECTION

<p>STEP I</p> <p>Determine the shaft diameter of the driven equipment and compare to maximum hub bore in column B of the dimensions shown. The shaft diameter should not exceed the maximum bore size to determine the coupling designation</p> <p>STEP II</p> <p>Determine the shaft diameter to the driver</p> <p>And compare to the maximum hub bore in Column B of the dimensions shown. If the Driver is a standard name Frame motor, use the column marked 'Fit Name Frame' to determine the coupling designation required.</p>	<p>STEP III</p> <p>The largest size shaft of either the driven or driver equipment will determine the ultimate coupling designation</p> <p>STEP IV</p> <p>Specify the coupling configuration, bore size for the driving and driven equipment hubs, and adjusting nut thread details. (See Notes (1) and (2) below table for standards).</p> <p>STEP V</p> <p>Specify type CPLR for standard coupling tolerances or type CPAT for API 610 7 th</p>
---	--

COU. SIZE	HP 100 RPW	THURST CA.	FT. NAMA FRAME	BOLTS PER FLS	BOLT DIA	A	B	C	D	F	A G		H	J	K		L	M	N	
											STD	MIN			STD	MIN				
1125	6.3	9000	100-016	4	1/14	3	1.1/8	1.3/4	3/8	7	1/8	1.1/4	1/3	0/15	4.7/18	1.5/8	.891	5.1/4	9.9/16	6.3/4
1525	8.0	11000	254-326	6	5/16	4	1.5/8	2.1/2	7/16	2.1/4	1/8	1.1/2	1/3	0/15	4.7/16	1.3/4	.891	6	10.5/16	7.5/8
2125	17.8	31000	334-445	6	1/2	5.13	2.1/8	2.1/8	5/8	2.11/18	-	1.3/4	1/3	0/16	4.7/16	2.5/8	.891	7.1/8	11.7/16	9.5/8
2625	33.8	31000	NO STD	6	1/2	5.35	2.5/8	2.5/8	5/8	2.15/16	-	3.1/2	1/3	0/16	4.7/16	2.5/8	.891	9.3/6	13.11/18	11.7/8
2675	44.4	31000	NO STD	6	1/2	5.35	2.7/8	2.7/8	8/4	3.7/16	-	3.1/2	1/3	0/16	4.7/16	2.7/8	.891	10.3/8	14.18/10	13.1/8
3125	57.0	41000	NO STD	6	1/2	8-3/4	3.1/8	3.1/8	8/4	4	-	3.1/2	1/3	0/16	4.7/16	2.7/8	.891	11.1/8	15.18/10	14.1/8
3875	109	73000	NO STD	6	3/4	815/18	3.7/8	3.7/8	13/16	4.3/8	1/2	4	1/3	0/18	4.7/16	2.7/8	.891	12.3/4	17.1/18	15.5/4
5000	310	160000	NO STD	8	1	11-3/4	5	5	1	6	5/8	3	1/4	1/8	4.7/16	4.1/2	1.375	15	NOSTD	19.1/2
6000	604	200000	NO STD	10	1	13-1/4	6	6	1-1/8	9.1/4	8/4	3.3/8	1/4	1/8	NOSTD	4.3/4	1.625	20.7/8	NOSTD	25.4/5
7250	712	300000	NO STD	14	1	15	7.1/4	7.1/4	2-1/4	10.3/4	8/4	3.11/18	5/16	1/8	NOSTD	7.1/16	1.931	25.1/16	NOSTD	31.15/18
8500	1148	350000	NO STD	12	1-1/8	17-1/4	8.1/2	8.1/2	2-1/4	15	8/4	3.9/16	5/16	1/8	NOSTD	7.5/16	1.931	33.9/16	NOSTD	40.9/16
10500	2148	400000	NO STD	12	1-1/8	20-1/2	10.1/2	10.1/2	2-3/4	18.3/8	4.3/16	5/16	1/8	NOSTD	8.5/15	19.31	40.15/16	NOSTD	44.115/16	

11, VASTA HOUSE, GR. FLOOR, JANMABOOMI MARG,

FORT, MUMBAI - 400001, INDIA.

TEL: 91-22-22844307/22871995/22872449

FAX: 91-22-22873597/22870770

E-mail: info@wiperdrive.com, WEB SITE: www.wiperdrive.com