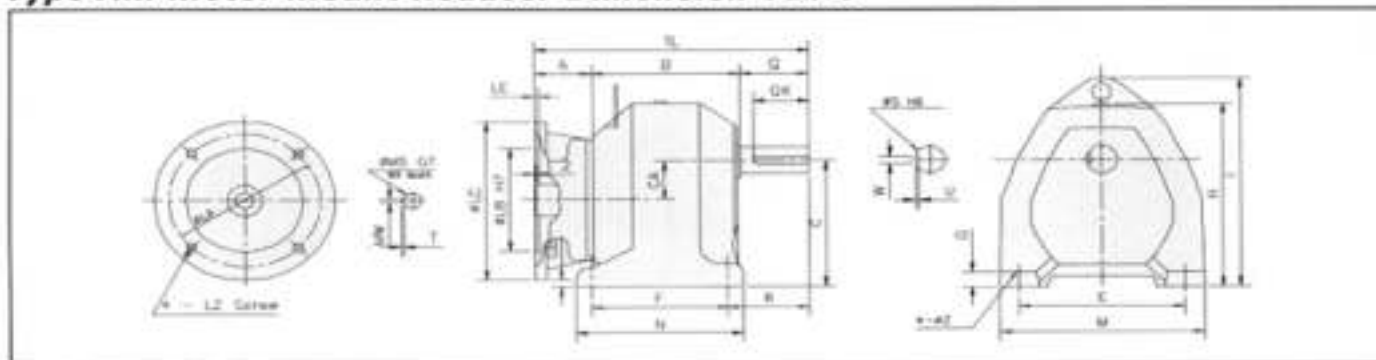




Type AM Motor Mount Reducer-Dimension Table

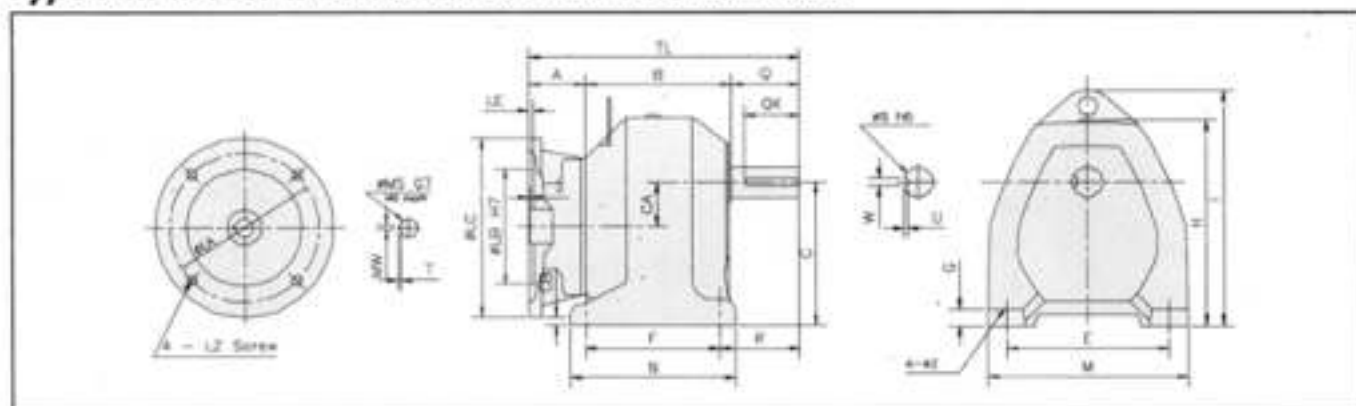


Class	MOTOR kW	Ratio	Frame	Dimension (mm)																	Mass (kg)																									
				TL	A	B	C	CA	CB	E	F	G	H	I	M	N	R	Z	Shaft-End																											
						U	V	W	X																																					
S	0.4	1/5	AMB55	179	47	96	105	22	3	130	75	12	165	-	155	105	54	12	36	31	22	6	3.5	8																						
		1/10	AMB105																																											
		1/15	AMB155																																											
		1/20	AMB205																																											
		1/25	AMC255																																											
		1/30	AMC305																																											
	0.75	1/45	AMC455	201	47	118	120	26	14	140	90	14	185	-	170	120	54	12	36	31	24	8	4	10.5																						
		1/50	AMC505																																											
		1/60	AMC605																																											
		1/75	AMC755																																											
		1/100	AMD1005																																											
		1/130	AMD1305																																											
1.5	1/150	AMD1505	235	47	130	135	33	22	170	125	17	215	246	210	155	78	12	58	53	32	10	5	20																							
	1/200	AME2005																																												
	1/5	AMC55																							195	55	104	120	25	-6	140	90	14	185	194	170	120	54	12	36	31	24	8	4	11.5	
	1/10	AMC105																																												
	1/15	AMC155																																												
	1/20	AMC205																																												
1/25	AMD255																																													
1/30	AMD305																																													
2.2	1/45	AMD455	243	55	130	135	33	2	170	125	17	215	246	210	155	78	12	58	53	32	10	5	22																							
	1/50	AMD505																																												
	1/60	AMD605																																												
	1/75	AMD755																																												
	1/100	AME1005																																												
	1/130	AME1305																																												
3	1/150	AME1505	258	55	145	150	34	16	190	140	22	237	274	245	180	83	15	58	53	38	10	5	30																							
	1/200	AMF2005																																												
	1/5	AM055																							246	65	128	135	33	2	170	125	17	215	246	210	155	78	12	56	53	32	10	5	22	
	1/10	AMD105																																												
	1/15	AMD155																																												
	1/20	AMD205																																												
1/25	AME255																																													
1/30	AME305																																													
4	1/45	AME455	257	60	139	150	34	16	190	140	22	237	274	245	180	83	15	58	53	38	10	5	29.5																							
	1/50	AME505																																												
	1/60	AME605																																												
	1/75	AME755																																												
	1/100	AMF1005																																												
	1/130	AMG1305																																												
5	1/150	AMG1505	313	60	171	180	42	38	220	160	25	283	320	280	200	107	19	82	77	42	12	5	42.5																							
	1/200	AMH2005																																												
	1/5	AME55																							268	71	139	150	34	-9	190	140	22	237	274	245	180	83	15	58	53	38	10	5	32.5	
	1/10	AME105																																												
	1/15	AME155																																												
	1/20	AMN205																																												
1/25	AMF255																																													
1/30	AMF305																																													
7	1/45	AMF455	303	71	150	180	42	13	220	160	25	283	320	280	200	107	19	82	77	42	12	5	43																							
	1/50	AMF505																																												
	1/60	AMF605																																												
	1/75	AMG755																																												
	1/100	AMG1005																																												
	1/130	AMH1305																																												
10	1/150	AMH1505	324	71	171	180	42	13	220	160	25	283	320	280	200	107	19	82	77	42	12	5	45.5																							
	1/200	AMK2005																																												
	1/5	AME55																							344	71	191	200	47	28	270	195	32	315	362	330	235	107	19	82	77	48	14	5.5	65	
	1/10	AME105																																												
	1/15	AME155																																												
	1/20	AMN205																																												
1/25	AMF255																																													
1/30	AMF305																																													
15	1/45	AMF455	358	71	205	225	57	43	300	215	35	345	393	360	265	112	24	82	77	56	16	6	80																							
	1/50	AMF505																																												
	1/60	AMF605																																												
	1/75	AMG755																																												
	1/100	AMG1005																																												
	1/130	AMH1305																																												
20	1/150	AMH1505	395	71	219	250	58	67	340	240	40	385	442	410	300	140	24	105	100	63	18	7	110																							
	1/200	AMK2005																																												

* For motor mounting dimension please refer table No. 4 on page 19



Type AM Motor Mount Reducer-Dimension Table



Class	MOTOR (kW)	Ratio	Frame	Dimension (mm)																	Mass (kg)			
				TL	A	B	C	CA	CB	E	F	G	H	I	M	N	R	Z	Shaft-End					
																	Q	QK	S	W	U			
S	3.7	1/5	AMF5S	309	74	153	180	42	13	220	100	25	283	320	280	200	107	19	82	77	42	12	5	47
		1/10	AMF10S																					
		1/15	AMF15S																					
		1/20	AMF20S																					
		1/25	AMG25S																					
		1/30	AMG30S																					
	5.5	1/45	AMG45S	344	74	188	200	47	28	270	195	32	315	362	330	235	107	19	82	77	48	14	5.5	69
		1/50	AMG50S																					
		1/60	AMG60S																					
		1/75	AMH75S																					
		1/100	AMH100S																					
		1/130	AMK130S																					
	7.5	1/150	AMK150S	408	74	229	250	58	67	340	240	40	385	442	410	300	140	24	105	100	63	18	7	114
		1/5	AMF5S																					
		1/10	AMF10S																					
1/15		AMF15S																						
1/20		AMG20S																						
1/25		AMH25S																						
11	1/30	AMH30S	368	91	195	225	55	20	300	215	35	345	393	360	265	112	24	82	77	56	16	6	82	
	1/45	AMH45S																						
	1/50	AMH50S																						
	1/60	AMH60S																						
	1/75	AMK75S																						
	1/100	AMK100S																						
11	1/5	AMG5S	349	89	178	200	52	-2	270	195	32	315	362	330	235	107	19	82	77	48	14	5.5	72	
	1/10	AMG10S																						
	1/15	AMG15S																						
	1/20	AMH20S																						
	1/25	AMK25S																						
	1/30	AMK30S																						
11	1/45	AMK45S	371	89	200	225	55	20	300	215	35	345	393	360	265	112	24	82	77	56	16	6	87	
	1/50	AMK50S																						
	1/60	AMK60S																						
	1/75	AMH75S																						
	1/100	AMH100S																						
	1/150	AMH150S																						
1/20	AMK20S	405	123	200	225	55	-5	300	215	35	345	393	360	265	112	24	82	77	56	16	6	96		
1/15	AMH15S																							
1/20	AMK20S																							
1/25	AMK25S																							
1/30	AMK30S																							
1/45	AMK45S																							
1/50	AMK50S	436	89	242	250	60	40	340	240	40	385	442	410	300	140	24	105	100	63	18	7	122		
1/60	AMK60S																							
1/75	AMH75S																							
1/100	AMH100S																							
1/150	AMH150S																							
1/200	AMK200S																							

* For motor mounting dimension please refer table No. 4 on page 19