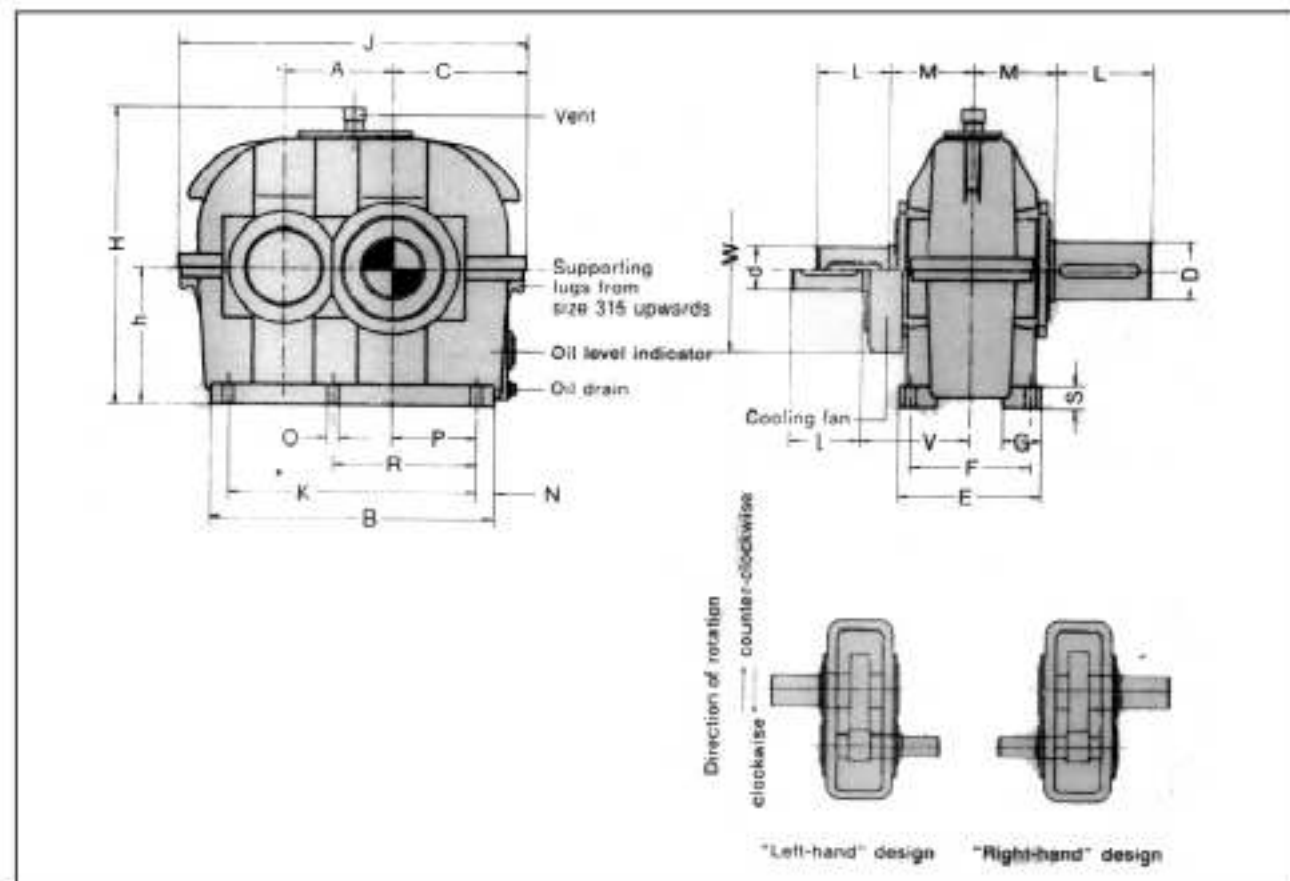




TGW modular gear units Helical gear, single reduction



Example of a gear unit designation :

Gear unit SAN 200 R

$P_n = 330$ [kW]; $n_1 = 1500$ [rpm];

$n_2 = 475$ [rpm]; $i_n = 3.15:1$

Normal design, size 200

R: 'right - hand' design for transmission of 330 [kW] at an input speed of $n_1 = 1500$ [rpm] and a transmission ratio of $i_n = 3.15:1$

Size of gear unit	i_n in 3.15		Input Shaft $i_n > 3.15$ up to 5		$i_n > 5$		Output shaft	Dimensions [mm]																	Fan cooling	Average weight [kg]	Oil quantity [litres]
	d	l	d	l	d	l		D	L	A	B	C	E	F	G	h	H	J	K	M	N	O	P	R			
80	25	60	20	50			32	80	80	205	115	140	110	45	100	240	280	175	90	15	14	60	20	185	180	18	0.7
90	30	80	25	60			38	80	90	230	125	150	120	50	110	260	310	200	95	15	14	70	20	195	180	25	0.9
100	35	80	30	80	20	50	45	110	100	260	135	155	125	50	125	290	340	220	100	20	14	75	25	200	180	35	1.2
110	45	110	35	80	25	60	48	110	110	290	145	170	140	50	140	320	370	250	105	20	14	85	25	205	230	50	1.7
125	50	110	40	110	30	80	55	110	125	330	165	185	155	55	160	355	420	290	115	20	14	100	25	215	230	65	2.2
140	55	110	45	110	35	80	60	140	140	365	180	200	160	60	180	410	460	315	125	25	14	110	35	220	300	95	3
160	60	140	50	110	40	110	70	140	160	410	205	230	190	65	200	450	520	350	135	30	18	120	35	230	300	120	4
180	70	140	55	110	45	110	80	170	180	470	220	250	210	70	225	505	560	410	150	30	18	145	35	240	300	170	6.5
200	75	140	60	140	50	110	90	170	200	520	250	270	220	75	250	550	640	450	160	35	23	155	40	260	380	225	8.5
225	85	170	70	140	55	110	100	210	225	590	275	290	240	80	280	605	710	520	175	35	23	180	45	270	380	320	12
250	95	170	80	170	60	140	110	210	250	650	305	325	265	90	315	665	790	570	185	40	27	195	50	295	530	415	16
280	105	210	90	170	70	140	120	210	280	720	340	350	290	100	355	735	880	630	200	45	27	215	55	310	530	570	21
315	115	210	95	170	80	170	140	250	315	805	375	390	315	110	400	815	975	705	215	50	33	240	60	335	650	760	30
355	130	250	110	210	90	170	160	300	355	910	425	400	325	120	450	905	1100	810	235	50	33	280	65	350	650	1025	42
400	145	250	120	210	100	210	170	300	400	1020	475	430	350	130	500	1000	1230	910	250	55	33	315	70	365	650	1400	58
450	160	300	130	250	110	210	190	350	450	1145	535	475	390	140	560	1200	1385	1025	280	60	39	355	80	405	650	1900	80
500	180	300	140	250	120	210	210	350	500	1275	590	510	425	150	630	1355	1555	1155	295	60	39	400	90	420	650	2800	105
560	190	350	160	300	130	250	240	410	560	1425	650	550	465	160	710	1510	1700	1305	310	60	39	450	100	435	650	3810	140
630	210	350	180	300	140	250	260	410	630	1600	730	570	485	170	800	1680	1910	1480	330	60	39	510	110	455	650	5100	190

Larger gear box sizes of this design on enquiry.

Dimensions not binding. Get certified drawings for installation purpose.

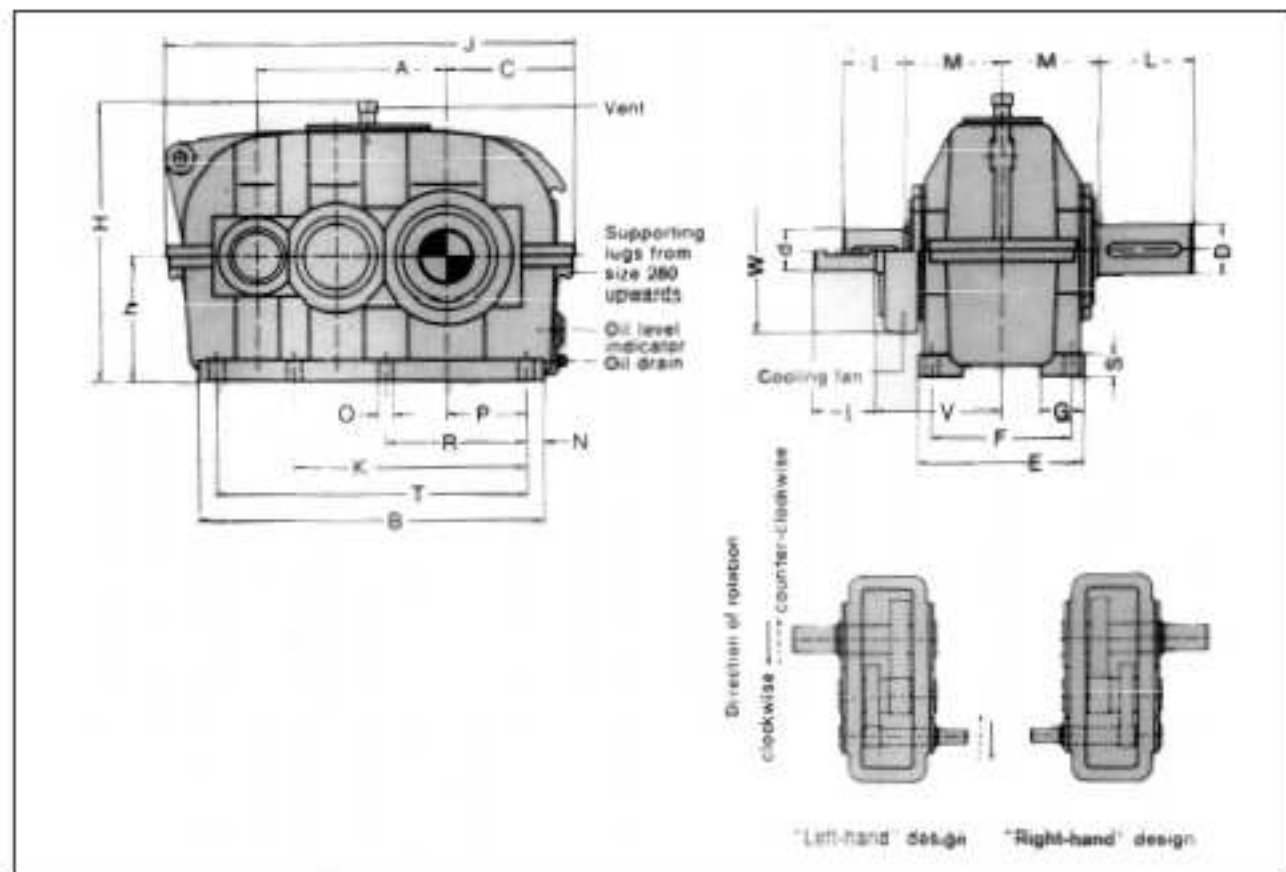
Modification of dimensions reserved.

Shaft ends with keys according to DIN 6885, part 1, Shape A. Shaft centering according to DIN 332, shape DS (with thread)

Tolerance field for shaft ends ISO ft. up to 50 mm $1 k 6$; over 50 mm $1 m 6$.



TGW modular gear units Helical gear, double reduction



Example of a gear unit designation :

Gear unit SBN 200 R
 $P_N = 195$ [kW]; $n_1 = 1500$ rpm ;
 $n_2 = 210$ [rpm]; $i_n = 7.1 : 1$

Normal design, size 200

R: 'right - hand' design for transmission of 195 [kW]
 at an input speed of $n_1 = 1500$ [rpm] and a transmission ratio of $i_n = 7.1 : 1$

Size of gear unit	Input Shaft		Dimensions [mm]																	Fan cooling	Average weight [kg]	Oil quantity [litres]									
	n_1	i_n	d	l	d	l	d	l	D	L	A	B	C	E	F	G	H	H	J				K	M	N	O	P	R	S	T	V
110	25	60	20	50				48	110	190	350	140	180		150	50	125	310	430		110	20	14	80	140	25	310	210	180	58	2
125	30	80	25	60				55	110	215	395	155	200		170	55	140	340	475		120	20	14	95	170	25	355	220	230	78	3
140	35	80	30	80	20	50	60	140	240	404	401	75	220		190	60	160	380	530		135	20	14	110	195	30	400	230	230	110	4
160	45	110	35	80	25	60	70	140	270	500	190	250		210	65	180	430	590		145	30	18	115	210	35	440	240	300	145	5	
180	50	110	40	110	30	80	80	170	305	652	152	270		230	70	200	475	655		160	30	18	135	240	35	505	250	300	200	8	
200	55	110	45	110	35	80	90	170	340	752	140	300		250	75	225	520	745		175	35	23	145	255	40	555	275	380	270	11	
225	60	140	50	110	40	110	100	210	385	820	160	320		270	80	250	570	825		190	35	23	165	290	45	635	285	380	360	14	
250	70	140	55	110	45	110	110	210	430	852	170	330		310	90	280	625	925		210	40	27	180	315	50	705	310	380	490	21	
280	75	140	60	140	50	110	120	204	488	932	180	340		340	100	315	690	1035		230	45	27	200	355	55	785	340	530	675	29	
315	85	170	70	140	55	110	140	235	505	1025	190	350		380	105	355	785	1145		260	50	33	220	405	60	875	365	530	910	42	
355	95	170	80	170	60	140	160	300	605	1185	200	360		410	120	400	865	1265		285	55	33	245	450	65	975	400	650	1230	60	
400	105	210	90	170	70	140	170	330	660	1250	210	370		460	130	450	960	1425		305	55	33	280	510	70	1105	425	650	1675	85	
450	115	210	95	170	80	170	190	350	705	1350	220	380		510	140	500	1065	1595	940	345	60	39	315	575	80	1245	455	650	2260	115	
500	125	250	110	210	90	170	220	350	805	1525	230	390		560	150	560	1185	1785	1050	475	70	39	350	645	90	1385	555	650	3500	165	
560	145	250	120	210	100	202	250	404	960	1705	240	400		640	160	630	1325	1985	1165	510	80	45	390	715	100	1545	595	650	4800	235	
630	160	300	130	250	110	210	300	470	1180	1915	250	410		690	170	700	1460	2215	1305	560	80	45	445	800	110	1755	635	650	6500	300	
710	180	300	140	250	120	210	340	505	1212	2015	260	420		770	190	800	1652	2480	1490	600	90	45	500	900	125	1970	670	650	9100	440	
800	190	350	160	300	130	250	400	605	1360	2240	270	430		820	200	900	1870	2770	1680	645	90	45	560	1100	140	2240	710	650	12500	600	

Larger gear box sizes of this design on enquiry.

Modification of dimensions reserved.

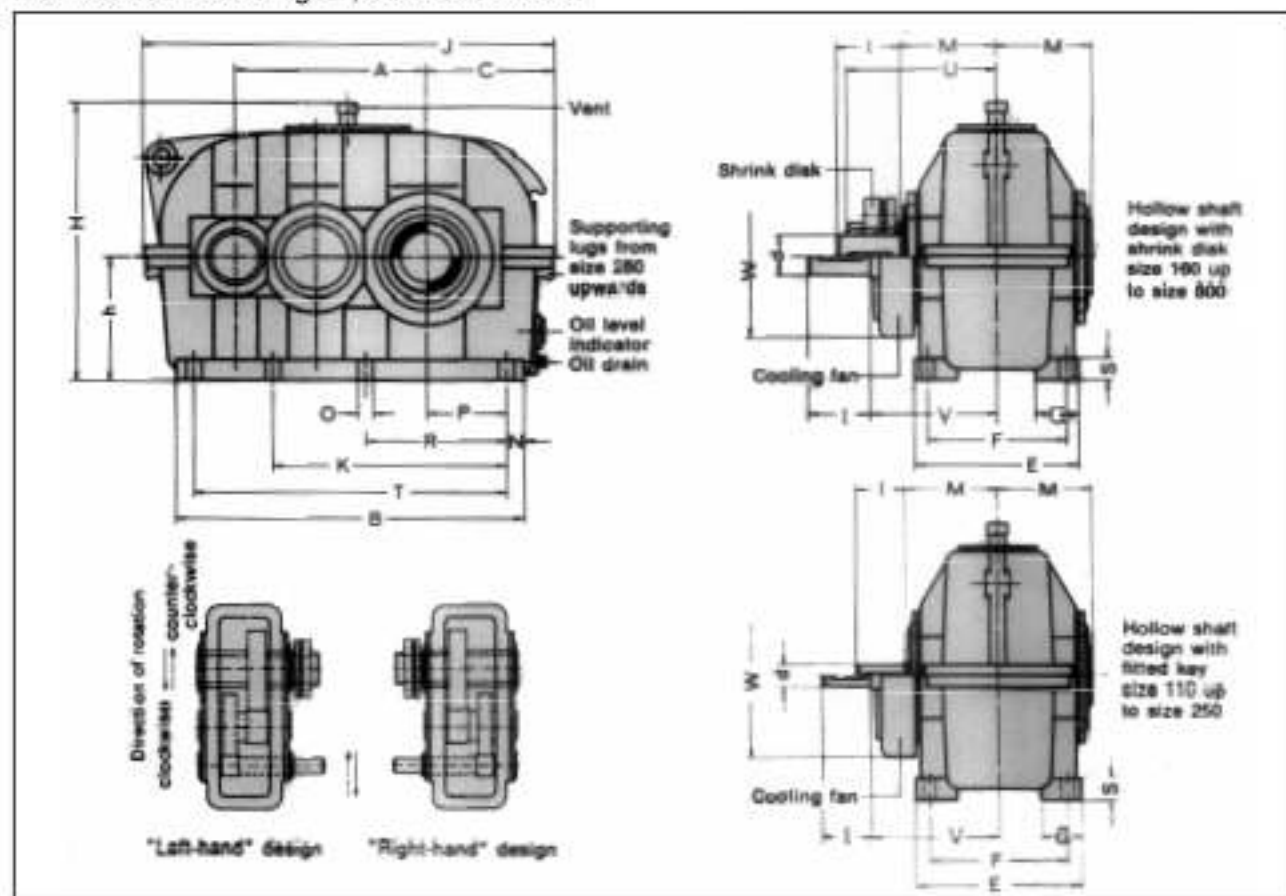
Shaft ends with keys according to DIN 6885; part 1, Shape A.

Shaft centering according to DIN 332, shape DS (with thread)

Tolerance field for shaft ends ISO ft, up to 50 mm f_7/k_6 ; over 50 mm f_8/m_6 .



TGW modular gear units, hollow shaft footmounted - Helical gear, double reduction



Example of a gear unit designation :

Gear unit SBH 200 R
 $P_N = 195$ [kW]; $n_1 = 1500$ [rpm];
 $n_2 = 210$ [rpm]; $i_n = 7.1 : 1$

Normal design, size 200

R: 'right - hand' design for transmission of 195 [kW]
 at an input speed of $n_1 = 1500$ [rpm] and a transmission ratio of $i_n = 7.1 : 1$

Size of gear unit	$i_n \leq 12.5$		$i_n > 12.5$ up to 20		Dimensions [mm]																	Fan cooling	Average weight [kg]	Oil quantity [litres]			
	d	l	d	l	d	A	B	C	E	F	G	h	H	J	K	M	N	O	P	R	S				T	U	V
110	25	60	20	50		190	350	140	180	150	50	125	310	430	110	20	14	80	140	25	310		210	180	58	2	
125	30	80	25	60		215	395	155	200	170	55	140	340	475	120	20	14	95	170	25	355		210	230	78	3	
140	35	80	30	80	20	50	240	440	175	220	190	60	160	380	530	135	20	14	110	195	30	400		230	230	110	4
160	45	110	35	80	25	60	270	500	190	250	210	65	180	430	590	145	30	18	115	210	35	440	225	240	300	145	5
180	50	110	40	110	30	80	305	565	215	270	230	70	200	475	665	165	30	18	135	240	35	505	250	250	300	200	8
200	55	110	45	110	35	80	340	625	240	300	250	75	225	520	745	175	35	23	145	255	40	555	275	275	380	270	11
225	60	140	50	110	40	110	385	705	260	320	270	80	250	570	825	190	35	23	165	290	45	635	295	285	380	360	14
250	70	140	55	110	45	110	430	785	290	370	310	90	280	625	925	210	40	27	180	315	50	705	325	310	380	490	21
280	75	140	60	140	50	110	480	875	325	400	340	100	315	690	1035	230	45	27	200	355	55	785	360	340	530	675	29
315	85	170	70	140	55	110	540	975	355	450	380	110	355	785	1145	260	50	33	220	405	60	875	420	365	530	910	42
355	95	170	80	170	60	140	605	1085	390	480	410	120	400	865	1265	285	55	33	245	450	65	975	450	400	650	1230	60
400	105	210	90	170	70	140	680	1215	440	530	460	130	450	960	1425	305	55	33	280	510	70	1105	490	425	650	1675	85
450	115	210	95	170	80	170	765	1365	490	600	510	140	500	1065	1595	345	60	39	315	575	80	1245	550	455	650	2260	115
500	125	250	110	210	90	170	855	1525	550	650	560	150	560	1185	1785	385	70	39	350	645	90	1385	715	555	650	3500	165
580	145	250	120	210	100	210	960	1705	610	750	640	160	630	1325	1985	435	80	45	390	715	100	1545	760	595	650	4800	235
630	160	300	130	250	110	210	1080	1915	675	800	690	170	710	1460	2150	485	80	45	445	800	110	1755	840	635	650	6500	330
710	180	300	140	250	120	210	1210	2150	760	900	770	190	800	1650	2480	545	90	45	500	900	125	1970	890	670	650	9100	440
800	190	350	150	300	130	250	1360	2420	840	1000	870	200	900	1870	2770	605	90	45	560	1000	140	2240	955	710	650	12500	600

Larger gear box sizes of this design on enquiry.

Modification of dimensions reserved.

Shaft ends with keys according to DIN 6885; part 1, Shape A.

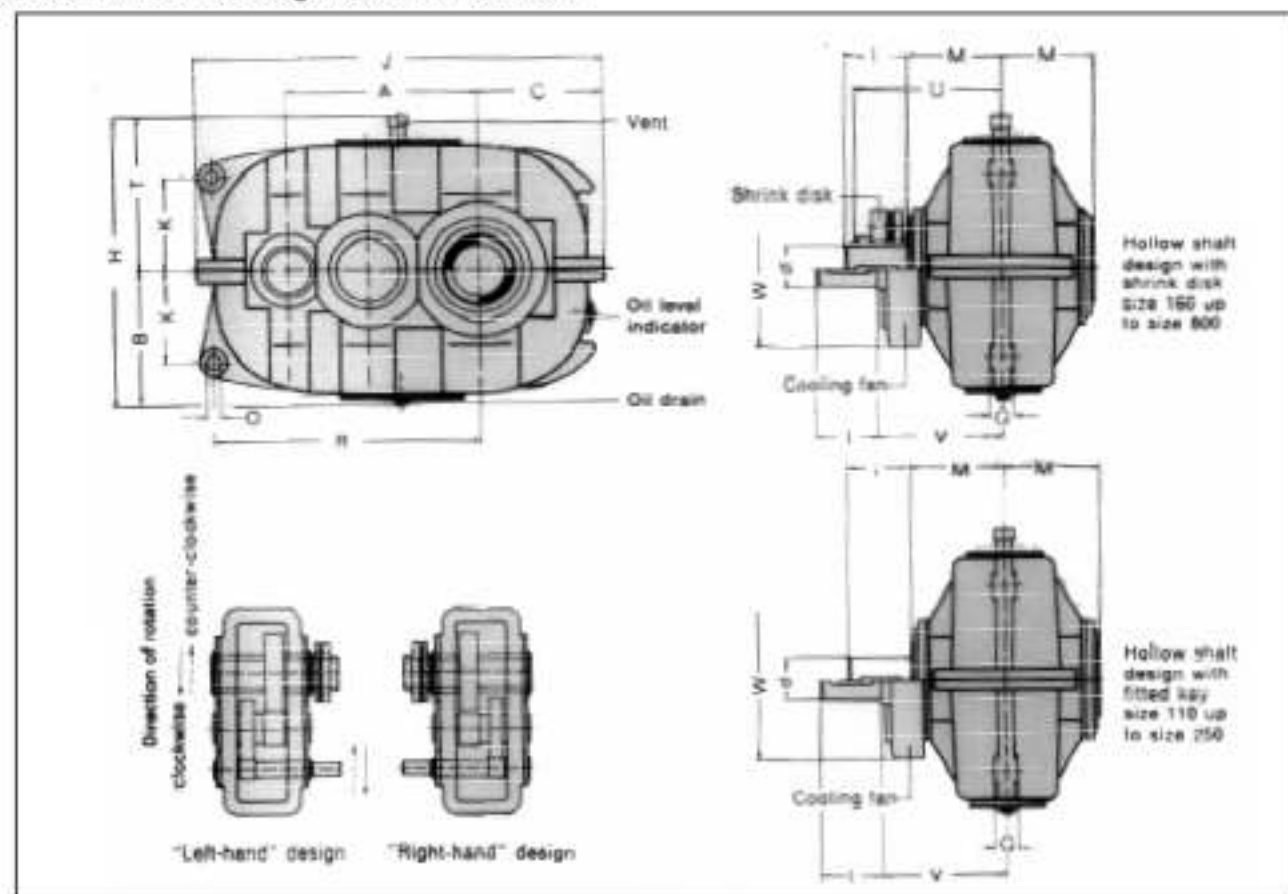
Shaft centering according to DIN 332, shape DS (with thread)

Tolerance field for shaft ends ISO RL, up to 50 mm ± 0.016 ; over 50 mm ± 0.025 .



ELECON-TGW DURUNORM modular gear units, shaftmounted Helical gear, double reduction

SBA



Example of a gear unit designation :

Gear unit SBA 200 R
 $P_N = 195$ [kW]; $n_1 = 1500$ [rpm];
 $n_2 = 210$ [rpm]; $i_n = 7.1 : 1$

Normal design, size 200

R: 'right - hand' design for transmission of 195 [kW] at an input speed of $n_1 = 1500$ [rpm] and a transmission ratio of $i_n = 7.1 : 1$

Gear unit	$i_n \leq 12.5$		Input Shaft $i_n > 12.5$ up to 20		$i_n > 20$		Dimensions [mm]														Fan cooling	Average weight [kg]	Oil quantity [litres]
	d	l	d	l	d	l	A	B	C	G	H	J	K	M	OH11	R	T	U	V	W			
110	25	60	20	50			190	160	140	25	345	430	95	110	18	270	185		210	180	51	1	
125	30	80	25	60			215	175	155	28	375	475	110	120	18	300	200		220	230	68	2	
140	35	80	30	80	20	50	240	195	175	30	415	530	120	135	20	330	220		230	230	96	3	
160	45	110	35	80	25	60	270	215	190	32	465	590	135	145	20	375	250	225	240	300	127	4	
180	50	110	40	110	30	80	305	240	215	35	515	665	160	160	25	420	275	250	250	300	174	5	
200	55	110	45	110	35	80	340	260	240	45	555	745	165	175	30	475	295	275	275	380	235	6	
225	60	140	50	110	40	110	385	290	260	50	610	825	185	190	35	535	320	295	285	380	314	8	
250	70	140	55	110	45	110	430	315	290	55	660	925	210	210	40	605	345	325	310	380	428	12	
280	75	140	60	140	50	110	480	345	325	60	720	1035	235	230	45	670	375	360	340	530	595	17	
315	85	170	70	140	55	110	540	380	355	70	810	1145	265	260	50	745	430	420	365	530	800	24	
355	95	170	80	170	60	140	605	415	390	80	880	1265	295	285	55	815	465	450	400	650	1080	35	
400	105	210	90	170	70	140	680	460	440	90	970	1425	320	305	60	925	510	490	425	650	1475	50	
450	115	210	95	170	80	170	765	515	490	105	1080	1595	370	345	65	1030	565	550	455	650	1990	65	
500	125	250	110	210	90	170	855	575	550	105	1200	1785	415	475	70	1145	625	715	555	650	3120	95	
560	145	250	120	210	100	210	960	645	610	110	1340	1985	470	510	75	1275	695	760	595	650	4190	135	
630	160	300	130	250	110	210	1080	725	675	115	1500	2215	540	560	80	1425	775	840	635	650	5660	190	
710	180	300	140	250	120	210	1210	830	760	120	1695	2480	610	600	85	1590	865	890	670	650	7650	270	
800	190	350	160	300	130	250	1360	940	840	125	1910	2770	690	645	90	1780	970	955	710	650	10140	380	

Larger gear box sizes of this design on enquiry.

Modification of dimensions reserved.

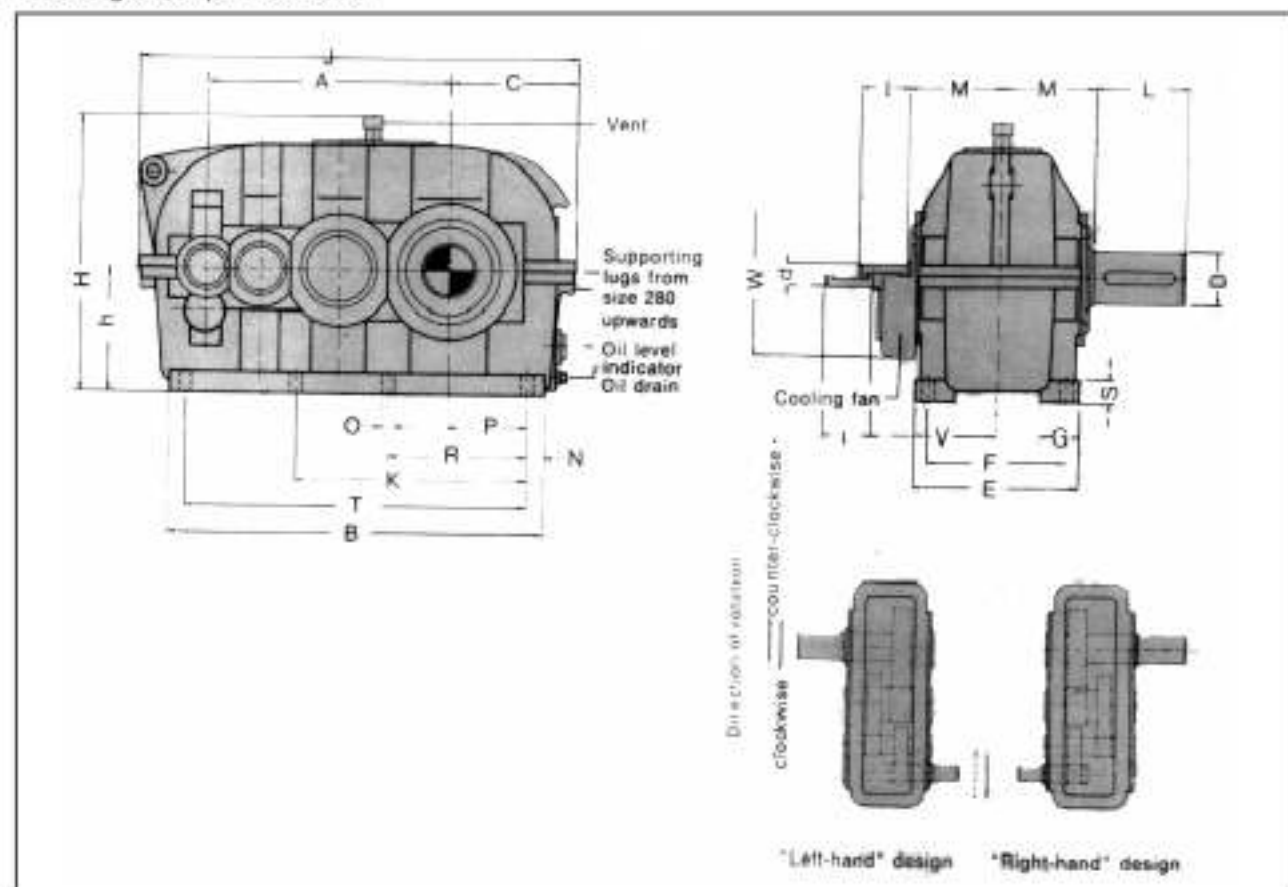
Shaft ends with keys according to DIN 6885, part 1, Shape A.

Shaft centering according to DIN 352, shape DS (with thread)

Tolerance field for shaft ends ISO RL, up to 50 mm 1 k 6; over 50 mm f m 6.



TGW modular gear units Helical gear, triple reduction



Example of a gear unit designation :

Gear unit SCN 200 R
 $P_N = 43$ [kW]; $n_1 = 1500$ rpm ;
 $n_2 = 38$ [rpm]; $i_n = 40 : 1$

Normal design, size 200

R: 'right - hand' design for transmission of 43 [kW]
 at an input speed of $n_1 = 1500$ [rpm] and a transmission ratio of $i_n = 40:1$

Size of gear unit	Input Shaft			Dimensions [mm]																	Fun cooling	Average weight [kg]	Oil quantity [litres]			
	n_1	d_1	l_1	D	L	A	B	C	E	F	G	h	H	J	K	M	N	O	P	R				S	T	V
160	25	60	20	50	70	140	350	555	190	250	210	65	180	430	645	145	30	18	115	210	35	495	240	300	160	8
180	30	80	25	60	80	170	395	625	252	320	230	70	200	475	725	160	30	18	135	240	35	565	250	300	215	10
200	35	80	30	80	20	50	90	170	408	852	403	75	225	520	805	175	35	23	145	255	40	615	275	380	295	14
225	45	110	35	80	25	60	100	210	495	752	603	80	250	570	895	190	35	23	165	290	45	705	285	380	405	22
250	50	110	40	110	30	80	110	210	558	802	630	90	280	625	900	210	40	27	180	315	50	780	310	380	540	28
280	55	110	45	110	35	80	120	210	602	902	640	100	315	690	1130	230	45	27	200	355	55	880	340	530	720	39
315	60	140	50	110	40	110	140	250	700	1085	854	110	355	785	1255	260	50	33	220	405	60	985	365	530	970	56
355	70	140	55	110	45	110	160	300	795	1203	904	120	400	855	1400	285	55	33	245	450	65	1110	400	650	1300	80
400	75	140	60	140	50	110	170	300	880	1355	1054	130	450	960	1565	305	55	33	280	510	70	1245	423	650	1770	115
450	85	170	70	140	55	110	190	350	990	1504	1160	140	500	1065	1750	345	60	39	315	575	80	1400	455	650	2350	165
500	95	170	80	170	60	140	220	350	1105	1690	1305	150	560	1185	1950	385	70	39	350	645	90	1550	555	650	3850	220
560	105	210	90	170	70	140	250	410	1240	1895	1505	160	630	1325	2175	415	80	45	390	715	100	1735	595	650	5300	310
630	115	210	95	170	80	170	300	470	1395	2145	1695	170	710	1485	2485	430	80	45	445	800	110	1985	635	650	7250	450
710	125	250	110	210	90	170	340	550	1565	2400	1900	190	800	1665	2740	490	90	45	500	900	125	2220	670	650	10100	670
800	145	250	120	210	100	210	400	650	1760	2700	2400	200	900	1870	3040	580	90	45	560	1100	140	2520	710	650	14100	900

Larger gear box sizes of this design on enquiry.

Modification of dimensions reserved.

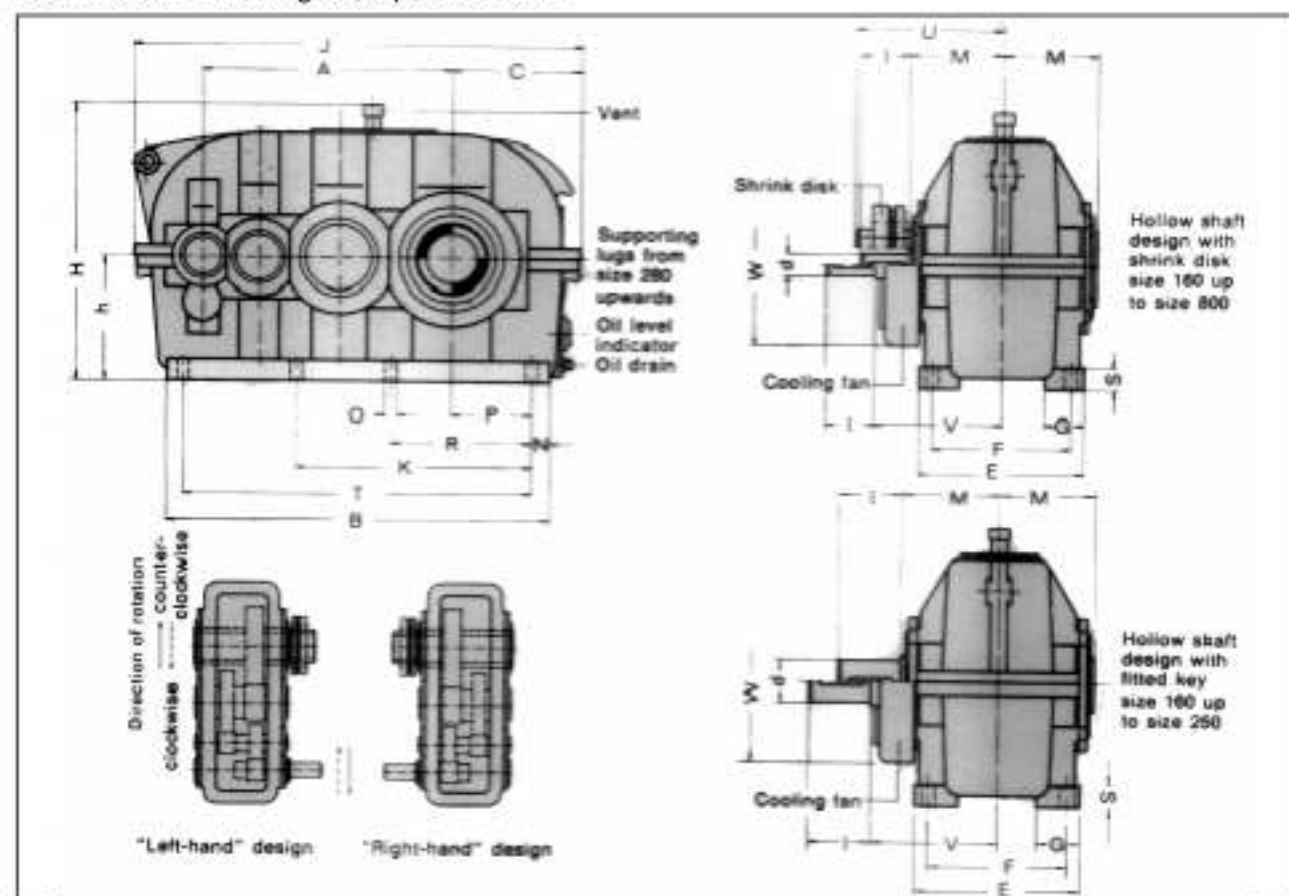
Shaft ends with keys according to DIN 6885, part 1, Shape A.

Shaft centering according to DIN 332, shape DS (with thread)

Tolerance field for shaft ends ISO ft, up to 50 mm f_7/k_6 ; over 50 mm f_8/m_6 .



TGW modular gear units, hollow shaft, footmounted - Helical gear, triple reduction



Example of a gear unit designation :

Gear unit SBH 200 R

$P_N = 43$ [kW]; $n_1 = 1500$ [rpm];

$n_2 = 38$ [rpm]; $i_n = 40 : 1$

Normal design, size 200

R: 'right - hand' design for transmission of 43 [kW] at an input speed of $n_1 = 1500$ [rpm] and a transmission ratio of $i_n = 40 : 1$

Size of gear unit	Input Shaft						Dimensions [mm]																	Fan cooling	Average weight [kg]	Oil quantity [litres]		
	$i_n \leq 45$	$i_n > 45$ up to 100		$i_n > 100$		A	B	C	E	F	G	H	K	M	N	O	P	RS	T	U	V	W						
160	25	60	20	50			350	555	190	250	210	65	180	430	645	145	30	18	115	210	35	495	225	240	300	160	8	
180	30	80	25	60			395	625	215	270	230	70	200	475	725	160	30	18	135	240	35	565	250	250	300	215	10	
200	35	80	30	80	20	50	440	685	240	300	250	75	225	520	805	175	35	23	145	255	40	615	275	275	380	295	14	
225	45	110	35	80	25	60	495	775	260	320	270	80	250	570	895	190	35	23	165	290	45	705	295	285	380	405	22	
250	50	110	40	110	30	80	555	860	290	370	310	90	280	625	1000	210	40	27	180	315	50	780	325	310	380	540	28	
280	55	110	45	110	35	80	620	970	325	400	340	100	315	690	1130	230	45	27	200	355	55	880	360	340	530	720	39	
315	60	140	50	110	40	110	700	1085	355	450	380	110	355	785	1255	655	260	50	33	220	405	60	985	420	365	530	970	56
355	70	140	55	110	45	110	785	1220	390	480	410	120	400	865	1400	740	285	55	33	245	450	65	1110	450	400	650	1300	80
400	75	140	60	140	50	110	880	1355	440	530	460	130	450	960	1555	840	305	55	33	280	510	70	1245	490	425	650	1770	115
450	85	170	70	140	55	110	990	1520	490	600	510	140	500	1065	1750	940	345	60	39	315	575	80	1400	550	455	650	2350	165
500	95	170	80	170	60	140	1105	1690	550	650	560	150	560	1185	1950	1050	475	70	39	350	645	90	1550	715	555	650	3850	220
550	105	210	90	170	70	140	1240	1895	610	750	640	160	630	1325	2175	1165	510	80	45	390	715	100	1735	760	595	650	5300	310
630	115	210	95	170	80	170	1395	2145	695	800	690	170	710	1485	2485	1320	560	80	45	445	800	110	1985	840	635	650	7250	450
710	125	250	110	210	90	170	1565	2400	760	800	770	190	800	1665	2740	1490	600	90	45	500	900	125	2220	890	670	650	10100	670
800	145	250	120	210	100	210	1760	2700	840	1000	870	200	900	1870	3040	1680	645	90	45	560	100	140	2520	955	710	650	14100	900

Larger gear box sizes of this design on enquiry.

Modification of dimensions reserved.

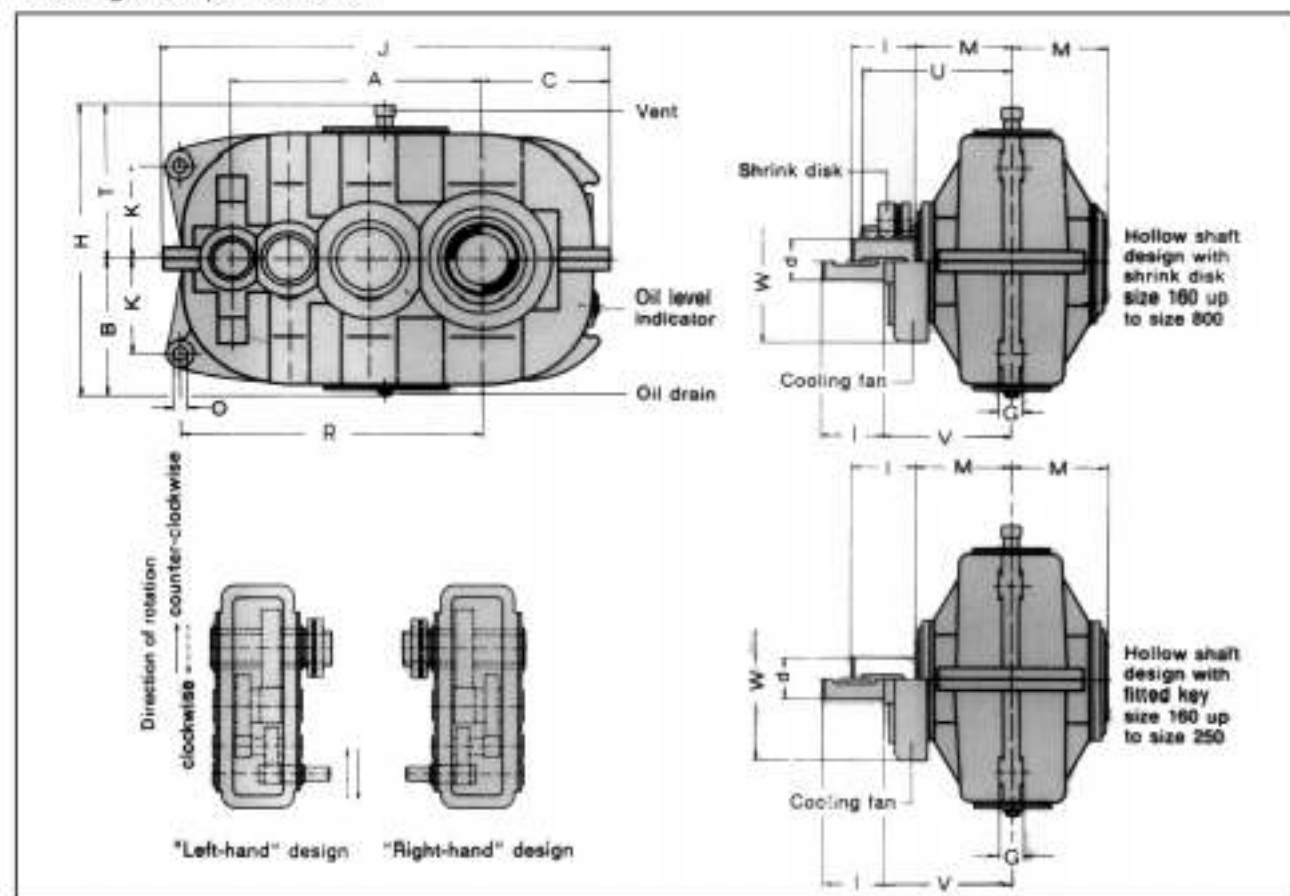
Shaft ends with keys according to DIN 6885, part 1, Shape A.

Shaft centering according to DIN 332, shape DS (with thread)

Tolerance field for shaft ends ISO ft, up to 50 mm f_7/k_6 ; over 50 mm f_8/m_6 .



TGW modular gear units, shaft mounted Helical gear, triple reduction



Example of a gear unit designation :

Gear unit SCA 200 R

$P_N = 43$ [kW]; $n_1 = 1500$ [rpm];

$n_2 = 38$ [rpm]; $i_n = 40 : 1$

Normal design, size 200

R: 'right - hand' design for transmission of 43 [kW]

at an input speed of $n_1 = 1500$ [rpm] and a transmission ratio of $i_n = 40 : 1$

Gear unit	Input Shaft						Dimensions [mm]														Fun. coding	Average weight [kg]	Oil quantity [litres]
	$i_n \leq 45$		$i_n > 45$ up to 20		$i_n > 100$		A	B	C	G	H	J	K	M	O	R	T	L	V	W			
160	25	60	20	50			350	215	190	32	465	645	135	145	20	430	250	225	240	300	141	5	
180	30	80	25	60			395	240	215	35	515	725	160	160	25	470	275	250	250	300	188	7	
200	35	80	30	80	20	50	440	260	240	45	565	805	165	175	30	535	295	275	275	380	257	9	
225	45	110	35	80	25	60	495	290	250	50	610	895	185	190	35	600	320	295	285	380	345	11	
250	50	110	40	110	30	80	555	315	290	55	660	990	210	210	40	670	345	325	310	380	460	17	
280	55	110	45	110	35	80	620	345	325	60	720	1130	235	230	45	755	375	360	340	530	610	23	
315	60	140	50	110	40	110	700	380	355	70	810	1255	265	260	50	855	430	420	365	530	820	36	
355	70	140	55	110	45	110	785	415	390	80	880	1400	295	285	55	950	465	450	400	650	1100	50	
400	75	140	60	140	50	110	880	460	440	90	970	1565	320	305	60	1055	510	490	425	650	1520	70	
450	85	170	70	140	55	110	990	515	490	105	1080	1750	370	345	65	1185	565	550	455	650	2000	100	
500	95	170	80	170	60	140	1105	575	550	105	1200	1950	415	475	70	1310	625	715	555	650	3210	130	
560	105	210	90	170	70	140	1240	645	610	110	1340	2175	470	510	75	1465	695	760	595	650	4420	200	
630	115	210	95	170	80	170	1395	725	695	115	1500	2485	540	560	80	1655	775	840	635	650	6050	280	
710	125	250	110	210	90	170	1565	830	750	120	1695	2740	610	600	85	1850	865	890	670	650	8080	390	
800	145	250	120	210	100	210	1760	940	840	125	1910	3040	690	645	90	2080	970	955	710	650	10870	540	

Larger gear box sizes of this design on enquiry.

Modification of dimensions reserved.

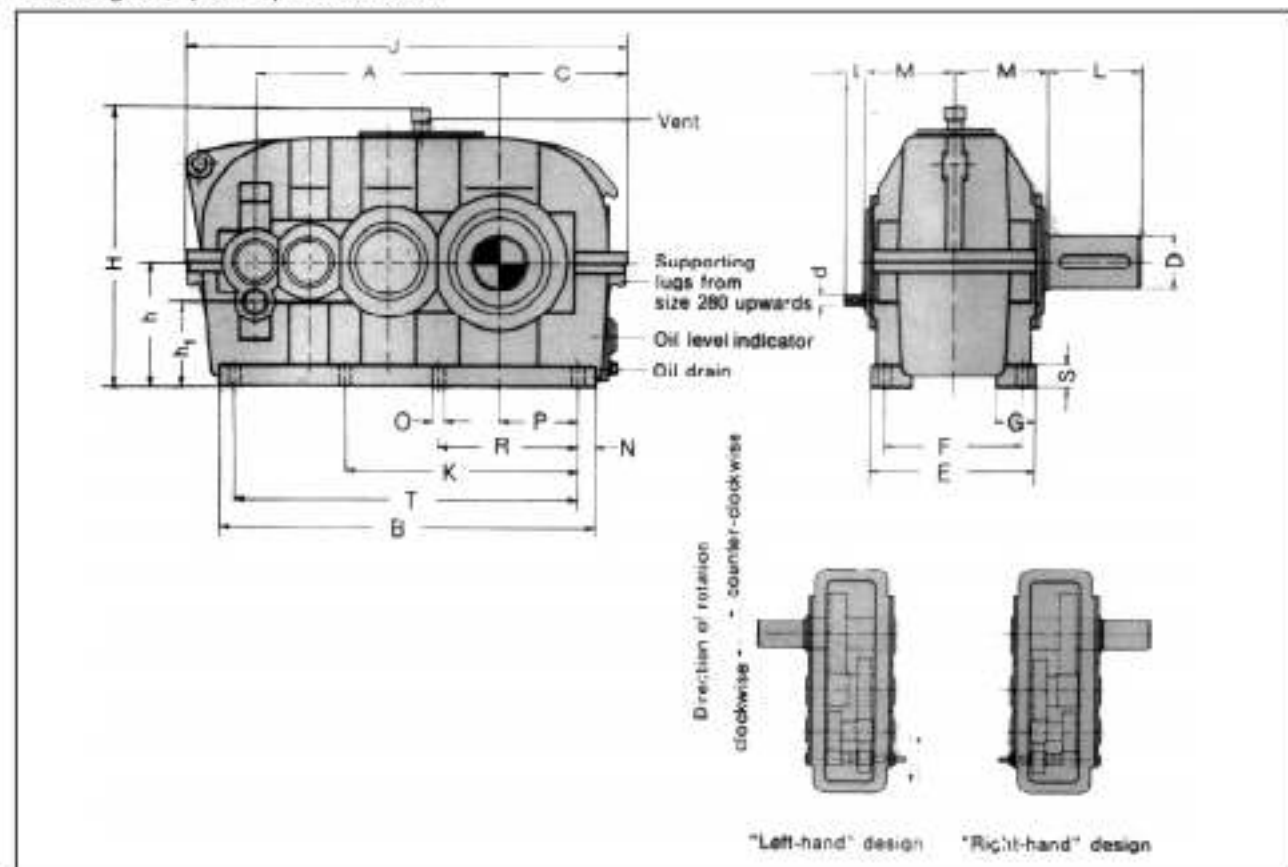
Shaft ends with keys according to DIN 6885, part 1, Shape A.

Shaft centering according to DIN 332, shape DS (with thread)

Tolerance field for shaft ends ISO fit, up to 50 mm $k 6$; over 50 mm $f 7$ m 6.



TGW modular gear units, shaft mounted Helical gear, quadruple reduction



Example of a gear unit designation :

Gear unit SDN 200 R
 $P_N = 22$ [kW]; $n_1 = 1500$ rpm ;
 $n_2 = 7.5$ [rpm]; $i_n = 40 : 1$

Normal design, size 200

R: 'right - hand' design for transmission of 22 [kW]
 at an input speed of $n_1 = 1500$ [rpm] and a transmission ratio of $i_n = 200 : 1$

Size of gear unit	Input Shaft				Output shaft	Dimensions [mm]																	Average weight [kg]	Oil quantity [litres]			
	$d_1 \leq 50$		$d_1 > 50$			D	L	A	B	C	E	F	G	h	h1	H	J	K	M	N	O	P			R	S	T
	d	i	d	i																							
225	18	40			100	210	495	775	260	320	270	80	250	170	570	895		190	35	23	165	290	45	705	405	22	
250	22	50			110	210	555	860	290	370	310	90	280	190	625	1000		210	40	27	180	315	50	780	540	28	
280	25	60	20	50	120	210	620	970	325	400	340	100	315	215	690	1130		230	45	27	200	355	55	880	720	39	
315	30	80	25	60	140	250	700	1085	355	450	380	110	355	245	785	1255	655	260	50	33	220	405	60	985	970	56	
355	40	110	30	80	160	300	785	1220	390	480	410	120	400	275	865	1400	740	285	55	33	245	450	65	1110	1300	80	
400	45	110	35	80	170	300	880	1355	440	530	460	130	450	310	960	1565	840	305	55	33	280	510	70	1245	1770	115	
450	50	110	40	110	190	350	950	1520	490	600	510	140	500	340	1065	1750	940	345	60	39	315	575	80	1400	2350	165	
500	55	110	45	110	220	350	1105	1690	550	650	560	150	560	380	1185	1950	1050	475	70	39	350	645	90	1550	3850	220	
560	60	140	50	110	250	410	1240	1895	610	750	640	160	630	430	1325	2175	1165	510	80	45	390	715	100	1735	5300	310	
630	70	140	55	110	300	470	1395	2145	695	800	690	170	710	485	1485	2485	1320	560	80	45	445	800	110	1985	7250	450	
710	75	140	60	140	340	550	1565	2400	760	900	770	190	800	550	1665	2740	1490	600	90	45	500	900	125	2220	10100	670	
800	85	170	70	140	400	650	1760	2700	840	1000	870	200	900	620	1870	3040	1680	645	90	45	560	1100	140	2520	14100	900	

Larger gear box sizes of this design on enquiry.

Modification of dimensions reserved.

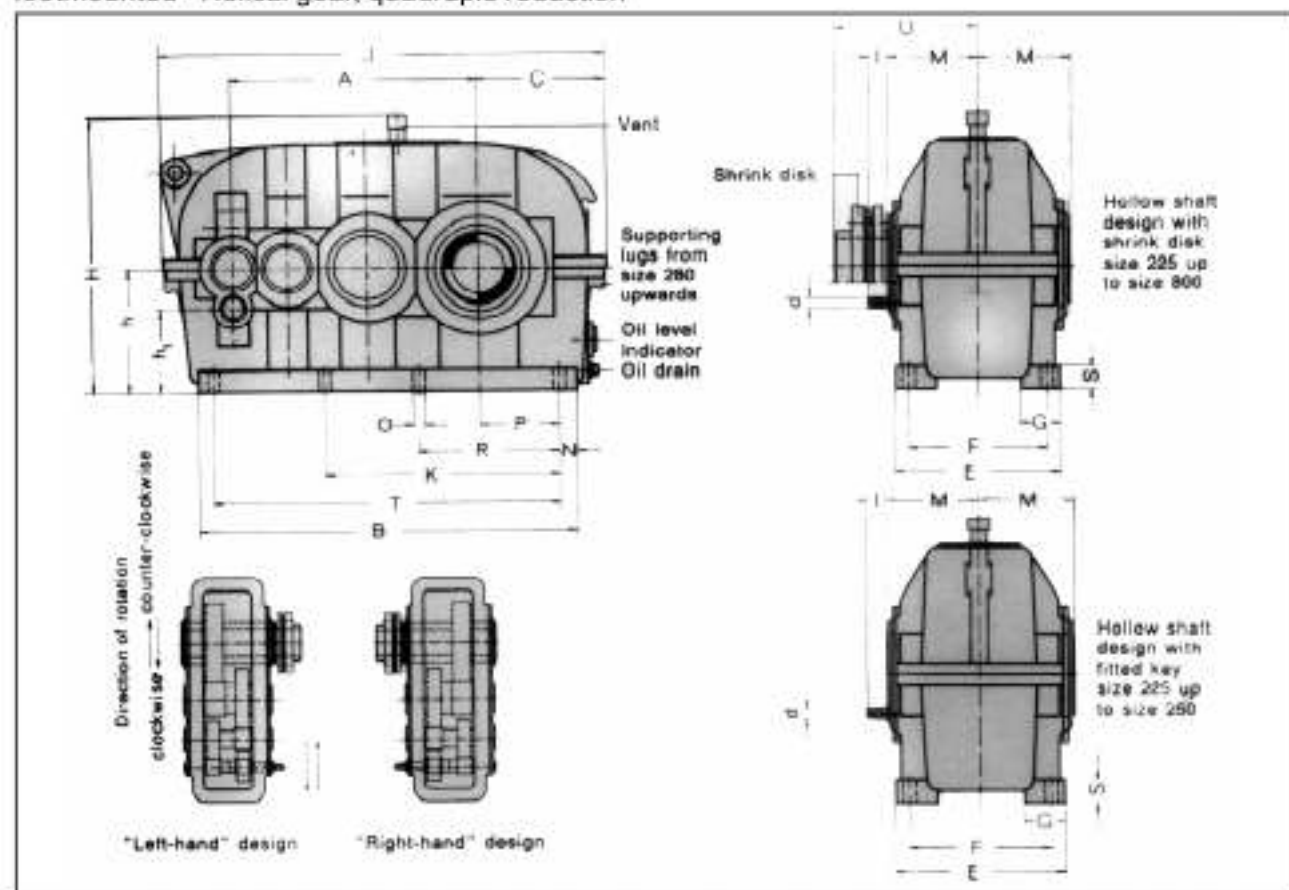
Shaft ends with keys according to DIN 6885, part 1, Shape A.

Shaft centering according to DIN 332, shape DS (with thread)

Tolerance field for shaft ends ISO ft, up to 50 mm f 6; over 50 mm f m 6.



TGW modular gear units, hollow shaft footmounted - Helical gear, quadruple reduction



Example of a gear unit designation :

Gear unit SDH 280 R
 $P_N = 22$ [kW]; $n_1 = 1500$ rpm ;
 $n_2 = 7.5$ [rpm]; $i_N = 200 : 1$

Normal design, size 200

R: 'right - hand' design for transmission of 22 [kW]
 at an input speed of $n_1 = 1500$ [rpm] and a transmission ratio of $i_N = 200 : 1$

Size of gear unit	Input Shaft		Dimensions [mm]																	Average weight [kg]	Oil quantity [litres]				
	$i_N < 500$																								
	d	l	d	l	A	B	C	E	F	G	h	H	H	J	K	M	N	O	P			R	S	T	U
225	18	40			496	775	260	320	270	80	250	170	570	895		190	35	23	165	290	45	705	295	405	22
250	22	50			555	860	290	370	310	90	280	190	625	1000		210	40	27	180	315	50	780	325	540	28
280	25	60	20	50	620	970	325	400	340	100	315	215	690	1130		230	45	27	200	355	55	880	360	720	39
315	30	80	25	60	700	1085	355	450	380	110	355	245	785	1255	655	260	50	33	220	405	60	965	420	970	56
355	40	110	30	80	785	1220	390	480	410	120	400	275	865	1440	740	285	55	33	245	450	65	1110	450	1300	80
400	45	110	35	80	880	1355	440	530	460	130	450	310	960	1565	840	305	55	33	280	510	70	1245	490	1770	115
450	50	110	40	110	990	1520	490	600	510	140	500	340	1065	1750	940	345	60	39	315	575	80	1400	550	2350	165
500	55	110	45	110	1105	1690	550	650	560	150	560	380	1185	1950	1050	475	70	39	350	645	90	1550	715	3850	220
560	60	140	50	110	1240	1895	610	750	640	160	630	430	1325	2175	1165	510	80	45	390	715	100	1735	760	5300	310
630	70	140	55	110	1395	2145	695	800	690	170	710	485	1485	2485	1320	560	80	45	445	800	110	1985	840	7250	450
710	75	140	60	140	1565	2400	760	900	770	190	800	550	1665	2740	1490	600	90	45	500	900	125	2220	890	10100	670
800	85	170	70	140	1760	2700	840	1000	870	200	900	620	1870	3040	1680	645	90	45	560	1100	140	2520	965	14100	900

Larger gear box sizes of this design on enquiry.

Modification of dimensions reserved.

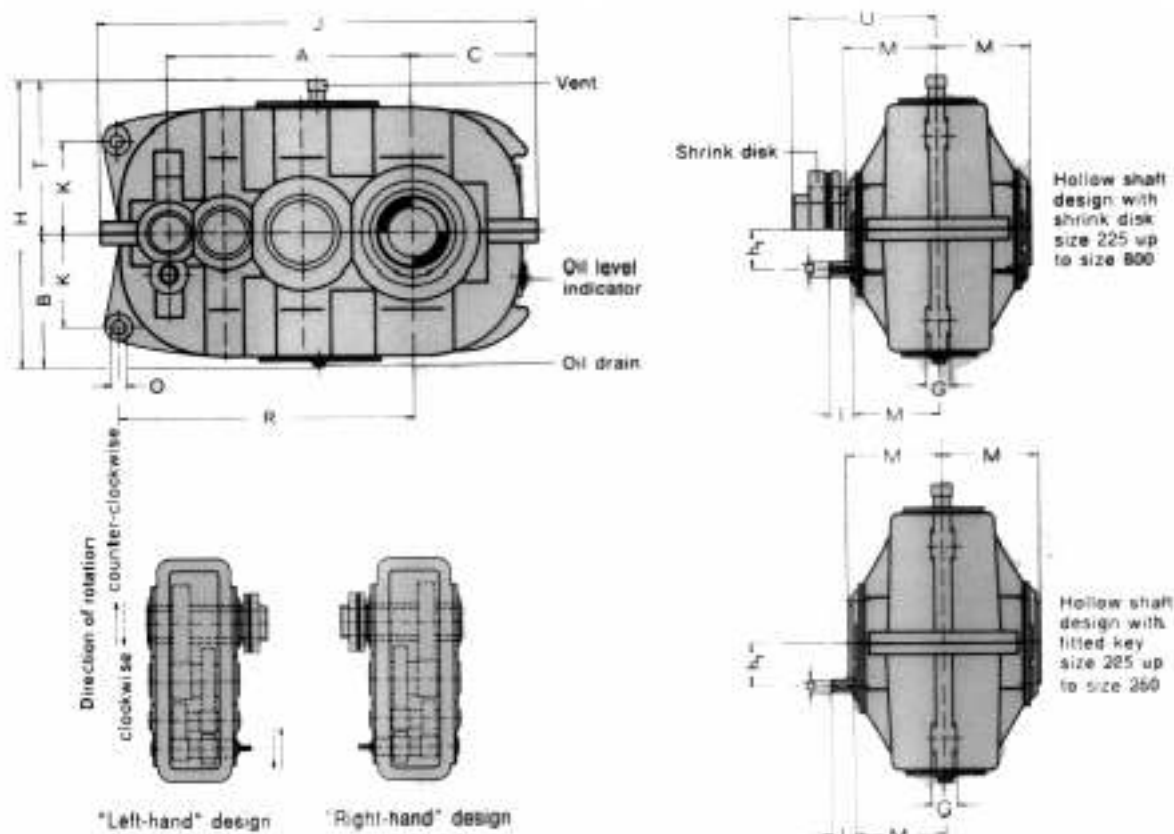
Shaft ends with keys according to DIN 6885, part 1, Shape A.

Shaft centering according to DIN 332, shape DS (with thread)

Tolerance field for shaft ends ISO ft, up to 50 mm 1 k 6; over 50 mm f m 6.



TGW modular gear units, shaftmounted Helical gear, quadruple reduction



Example of a gear unit designation :

Gear unit SDA 280 R
 $P_N = 22$ [kW]; $n_1 = 1500$ rpm ;
 $n_2 = 7.5$ [rpm]; $i_N = 200 : 1$

Normal design, size 280

R: 'right - hand' design for transmission of 22 [kW]
 at an input speed of $n_1 = 1500$ [rpm] and a transmission ratio of $i_N = 200 : 1$

Size of gear unit	Input Shaft				Dimensions [mm]														Average weight [kg]	Oil quantity [litres]
	$i_N < 500$		$i_N > 500$		A	B	C	G	h1	H	J	K	M	O	R	T	U			
	d	i	d	i																
225	18	40			495	290	260	50	80	610	895	185	190	35	600	320	296	245	11	
250	22	50			555	315	290	55	90	660	1000	210	210	40	670	345	325	460	17	
280	25	60	20	50	620	345	325	60	100	720	1120	235	230	45	755	375	360	610	23	
315	30	80	25	60	700	380	355	70	110	810	1255	265	260	50	895	430	420	820	36	
355	40	110	30	80	785	415	390	80	125	880	1440	295	285	55	950	465	450	1100	50	
400	45	110	35	80	880	460	440	90	140	970	1565	320	305	60	1065	510	490	1520	70	
450	50	110	40	110	990	515	490	105	160	1080	1750	370	345	65	1185	565	550	2000	100	
500	55	110	45	110	1105	575	550	105	180	1200	1950	415	475	70	1310	625	715	3210	130	
560	60	140	50	110	1240	645	610	110	200	1340	2175	470	510	75	1465	695	760	4420	200	
630	70	140	55	110	1395	725	695	115	225	1500	2485	540	560	80	1655	775	840	6050	280	
710	75	140	60	140	1565	830	760	120	250	1695	2740	610	600	85	1885	865	890	8190	390	
800	85	170	70	140	1760	940	840	125	280	1910	3040	690	645	90	2080	970	955	10870	540	

Larger gear box sizes of this design on enquiry.

Modification of dimensions reserved.

Shaft ends with keys according to DIN 6885, part 1, Shape A.

Shaft centering according to DIN 332, shape DS (with thread).

Tolerance field for shaft ends ISO ft, up to 50 mm f_7/k_6 , over 50 mm f_8/m_6 .



Power rating

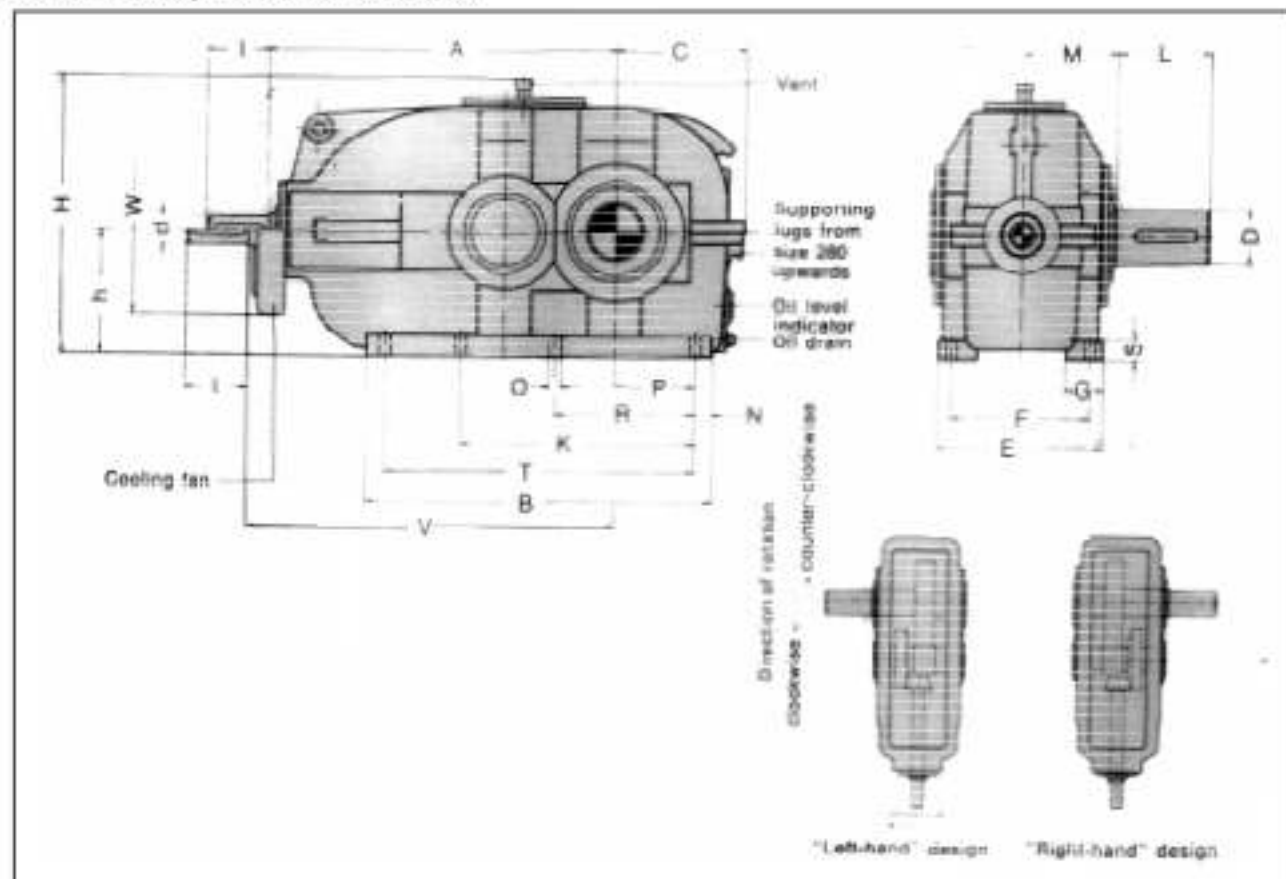
Nominal transmission ratio i_n	input speeds (rpm)		Size of gear unit											
			225	250	280	315	355	400	450	500	560	630	710	800
			Normal gear box rating P_n (kW)											
112	1500	13,4	20	29	40	59	91	110	160	255	380	480	690	990
	1000	8,9	14	20	27	39	59	70	105	170	240	320	470	670
	750	6,7	10	15	20	29	43	53	83	130	185	235	355	500
125	1500	12	18	26	36	52	81	97	145	230	320	425	610	880
	1000	8	12	17	23	34	53	64	95	155	210	285	420	570
	750	6	9	13	18	26	40	48	71	115	160	210	310	440
140	1500	10,7	16	23	32	46	72	87	130	205	290	380	550	800
	1000	7,15	11	16	21	31	47	58	85	135	190	250	365	520
	750	5,4	8	12	16	23	36	44	65	100	145	190	275	395
160	1500	9,37	14	20	28	41	63	76	115	180	255	340	495	710
	1000	6,25	9,5	14	18	27	42	51	75	120	170	225	330	470
	750	4,68	7,5	10	14	21	32	39	58	91	130	170	250	360
180	1500	8,34	13	19	26	37	57	69	100	160	225	295	435	630
	1000	5,56	8,5	12	17	25	38	46	68	105	150	200	290	420
	750	4,17	6,5	9,5	13	18	29	35	51	81	115	155	220	320
200	1500	7,5	12	15	22	33	51	62	92	145	205	270	395	560
	1000	5	8	10	14	22	34	41	61	96	135	180	260	375
	750	3,75	6	8	11	17	26	30	44	72	100	135	200	280
224	1500	6,7	10	14	19	29	45	55	82	130	185	240	355	500
	1000	4,47	7	9	13	20	30	37	54	86	120	160	235	340
	750	3,35	5	7	10	15	23	28	41	65	92	120	175	255
250	1500	6	9,5	12	17	26	40	48	71	115	165	215	315	450
	1000	4	6	8,5	12	17	27	32	48	77	110	145	210	300
	750	3	4,5	6,5	9	13	20	24	36	58	82	110	155	225
280	1500	5,35	8	11	15	23	36	44	65	100	145	190	275	395
	1000	3,57	5,5	7,5	10	15	24	29	43	67	95	125	185	265
	750	2,67	4	5,5	8	12	18	22	32	50	71	95	140	195
315	1500	4,76	7,5	9,5	13	21	32	39	58	91	130	170	250	355
	1000	3,17	5	6,5	9	14	21	25	37	60	86	115	165	235
	750	2,38	3,5	5	7	10	16	20	29	46	65	86	125	180
355	1500	4,23	6,5	8,5	12	18	29	35	51	82	115	155	225	320
	1000	2,82	4,5	6	8,5	12	19	23	34	53	75	99	145	205
	750	2,12	3	4,5	6,5	9,5	14	17	25	41	58	77	110	160
400	1500	3,75	6	8	11	16	26	31	45	71	100	135	195	280
	1000	2,5	4	5	7,5	11	17	20	30	48	68	90	130	190
	750	1,88	3	4	5,5	8	13	15	23	35	52	66	95	135
450	1500	3,33	5	7,5	10	13	21	29	39	65	92	120	175	255
	1000	2,22	3,5	5	6,5	9	14	19	26	43	60	81	115	170
	750	1,66	2,5	3,5	5	6,5	11	14	19	32	46	60	88	125
500	1500	3		6,5	9	12	19	26	35	58	82	110	155	225
	1000	2		4,5	6	8	13	17	23	38	54	72	105	150
	750	1,6		3	4,5	6	9,5	13	17	29	41	54	79	115
560	1500	2,68			8	11	17	23	30	50	71	95	140	195
	1000	1,78			5,5	7	11	16	21	35	49	65	94	135
	750	1,34			4	5,5	8,5	12	16	26	37	49	71	100
630	1500	2,38				9,5	15	21	28	46	65	86	125	180
	1000	1,59				6,5	10	14	18	30	43	57	83	120
	750	1,19				5	7,5	10	14	23	33	43	63	90
Nominal transmission ratio i_n	input speeds (rpm) n_1		Size of gear unit											
			225	250	280	315	355	400	450	500	560	630	710	80
			Thermal capacity, P_{G2} (kW), for gear boxes without cooling											
112 to 630	1500		38	50	66	90	105	135	170	210	275	360	430	550
	1000		35	45	55	80	95	120	150	200	255	340	410	530
	750		30	40	53	74	90	110	140	180	225	290	385	490

for power ratings indicated in heavy type check of the thermal capacity is always necessary (see the example of a calculation).

At normal type print this is necessary only at in an ambient temperature deviating from 20°C. Thermal capacity, P_{G2} (kW) and dimension for gears with fan cooling on request. The nominal transmission ratio is maintained with a tolerance of about - 3% intermediate transmission ratios are possible.



TGW modular gear units Bevel Helical gear, double reduction



Example of a gear unit designation :

Gear unit KBN 200 R
 $P_N = 130$ [kW]; $n_1 = 1500$ rpm ;
 $n_2 = 150$ [rpm]; $i_N = 10 : 1$

Normal design, size 200

R: 'right - hand' design for transmission of 130 [kW]
 at an input speed of $n_1 = 1500$ [rpm] and a transmission ratio of $i_N = 10 : 1$

Size of gear unit	Input Shaft				Output shaft	Dimensions [mm]																Shafting	Average weight [kg]	Oil quantity [litres]				
	$i_N \leq 10$		$i_N > 10$			D	L	A	B	C	E	F	G	h	H	K	M	N	O	P	R				S	T	V	W
	d	l	d	l																								
80	16	40	16	40	32	80	250	245	100	130	105	35	90	230	80	15	11,5	50	95	15	215	350	180	28	1,5			
90	20	50	20	50	38	80	280	275	115	140	116	40	100	250	90	15	11,5	60	110	20	245	380	180	37	2			
100	20	50	20	50	45	110	315	310	125	160	130	45	110	270	100	20	14	65	120	20	270	415	180	50	2,5			
110	25	60	20	50	48	110	350	350	140	180	150	50	125	310	110	20	14	80	140	25	310	450	230	65	3			
125	30	80	25	60	55	110	395	395	155	200	170	55	140	340	120	20	14	95	170	25	355	500	230	90	4			
140	35	80	30	80	60	140	440	440	175	220	190	60	160	380	135	20	14	110	195	30	400	545	300	120	5			
160	40	110	35	80	70	140	500	500	190	250	210	65	180	430	145	30	18	115	210	35	440	605	300	165	7			
180	42	110	40	110	80	170	565	565	215	270	230	70	200	475	160	30	18	135	240	35	505	685	380	220	9			
200	50	110	45	110	90	170	625	625	240	300	250	75	225	520	175	35	23	145	255	40	555	745	380	290	13			
225	55	110	50	110	100	210	705	705	260	320	270	80	250	570	190	35	23	165	290	45	635	835	380	395	18			
250	60	140	55	110	110	210	785	785	290	370	310	90	280	625	210	40	27	180	315	60	705	910	530	530	25			
280	65	140	60	140	120	210	875	875	325	400	340	100	315	690	230	45	27	200	355	55	785	1015	530	720	36			
315	75	140	70	140	140	250	975	975	355	450	380	110	355	785	260	50	33	220	405	60	875	1115	650	970	51			
355	90	170	80	170	160	300	1085	1085	390	480	410	120	400	865	285	55	33	245	450	65	975	1220	650	1305	69			
400	100	210	90	170	170	300	1215	1215	440	530	460	130	450	960	305	55	33	280	510	70	1105	1350	650	1765	95			
450	110	210	95	170	190	350	1365	1365	490	600	510	140	500	1065	345	60	39	315	575	80	1245	1500	650	2380	130			
500	120	210	110	210	220	350	1525	1525	550	650	560	150	560	1185	405	70	39	350	645	90	1385	1655	650	3950	185			
560	130	250	120	210	250	410	1705	1705	610	750	640	160	630	1325	465	80	45	390	715	100	1545	1835	650	5520	260			

Larger gear box sizes of this design on enquiry.

Modification of dimensions reserved.

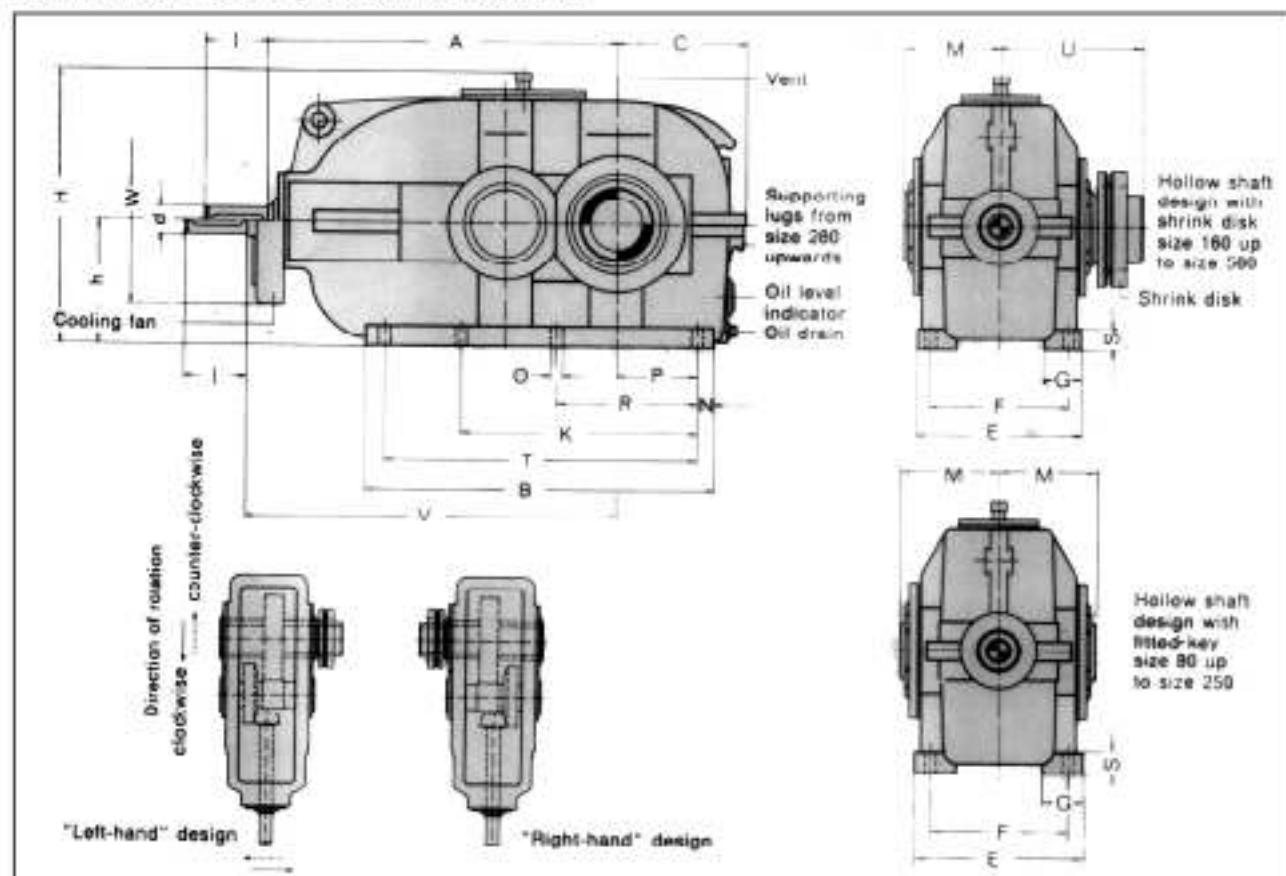
Shaft ends with keys according to DIN 6885, part 1, Shape A.

Shaft centering according to DIN 332, shape DS (with thread)

Tolerance field for shaft ends ISO fit, up to 50 mm l k 6; over 50 mm l m 6.



TGW modular gear units, hollow shaft footmounted - Helical gear, double reduction



Example of a gear unit designation :

Gear unit KBH 200 R

$P_N = 130$ [kW]; $n_1 = 1500$ rpm ;

$n_2 = 150$ [rpm]; $i_N = 10 : 1$

Normal design, size 200

R: 'right - hand' design for transmission of 130 [kW]

at an input speed of $n_1 = 1500$ [rpm] and a transmission ratio of $i_N = 200 : 1$

Size of gear unit	Input Shaft		Dimensions [mm]																	R _h cooling		Average weight [kg]	Oil quantity [litres]		
	$i_N < 10$																			V	W				
	d	l	d	l	A	B	C	E	F	G	h	H	K	M	N	D	P	R	S					T	U
80	16	40	16	40	250	245	100	120	95	35	90	230		80	15	11,5	50	95	15	215	350	180	28	1,5	
90	20	50	20	50	280	275	115	140	118	40	100	250		90	15	11,5	60	110	20	245	380	180	37	2	
100	20	50	20	50	315	310	125	160	130	45	110	270		100	20	14	65	120	20	270	415	180	50	2,5	
110	25	60	20	50	350	350	140	180	150	50	125	310		110	20	14	80	140	25	310	450	230	65	3	
125	30	80	25	60	395	395	155	200	170	55	140	340		120	20	14	95	170	25	355	500	230	90	4	
140	35	80	30	80	440	440	175	220	190	60	160	380		135	20	14	110	195	30	400	545	300	120	5	
160	40	110	35	80	500	500	190	250	210	65	180	430		145	30	18	115	210	35	440	605	300	155	7	
180	42	110	40	110	565	565	215	270	230	70	200	475		160	30	18	135	240	35	505	250	685	380	220	9
200	50	110	45	110	625	625	240	300	250	75	225	520		175	35	23	145	255	40	555	275	745	380	290	13
225	55	110	50	110	705	705	260	320	270	80	250	570		190	35	23	165	290	45	635	295	835	380	395	18
250	60	140	55	110	785	785	290	370	310	90	280	625		210	40	27	180	315	50	705	325	910	530	530	25
280	65	140	60	140	875	875	325	400	340	100	315	690		230	45	27	200	355	55	785	360	1015	530	720	36
315	75	140	70	140	975	975	355	450	380	110	355	785		260	50	33	220	405	60	875	420	1115	650	970	51
355	90	170	80	170	1085	1085	390	480	410	120	400	865		285	55	33	245	450	65	975	450	1220	650	1305	69
400	100	210	90	170	1215	1215	440	530	460	130	450	960		305	55	33	280	510	70	1105	490	1350	650	1765	95
450	110	210	95	170	1365	1365	490	600	510	140	500	1065	940	345	60	39	315	575	80	1245	550	1500	650	2380	130
500	120	210	110	210	1525	1525	550	650	560	150	560	1185	1050	475	70	39	350	645	90	1385	715	1655	650	3950	185
560	130	250	120	210	1705	1705	610	750	640	160	630	1325	1165	510	80	45	390	715	100	1545	760	1835	650	5520	260

Larger gear box sizes of this design on enquiry.

Modification of dimensions reserved.

Shaft ends with keys according to DIN 6885, part 1, Shape A.

Shaft centering according to DIN 332, shape DS (with thread)

Tolerance field for shaft ends ISO ft, up to 50 mm $l k 6$; over 50 mm $l m 6$.